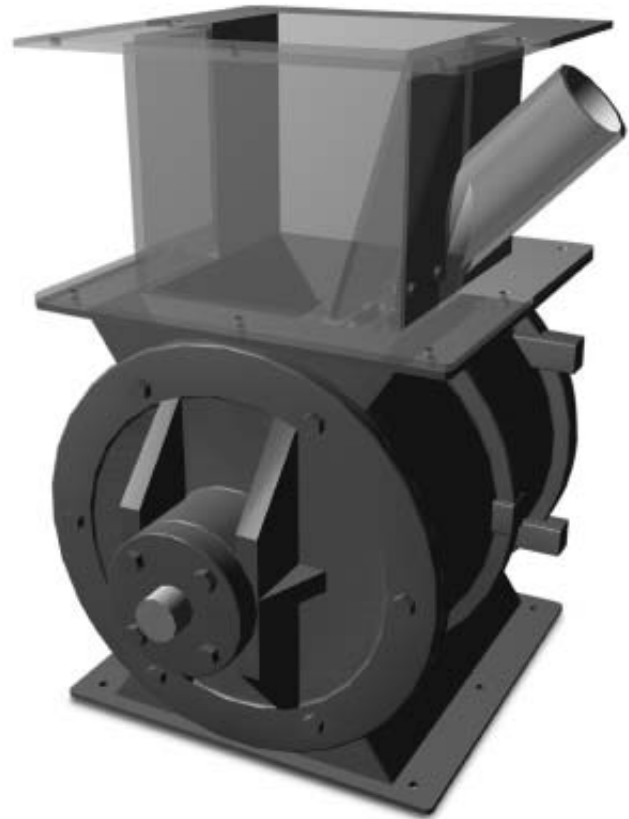
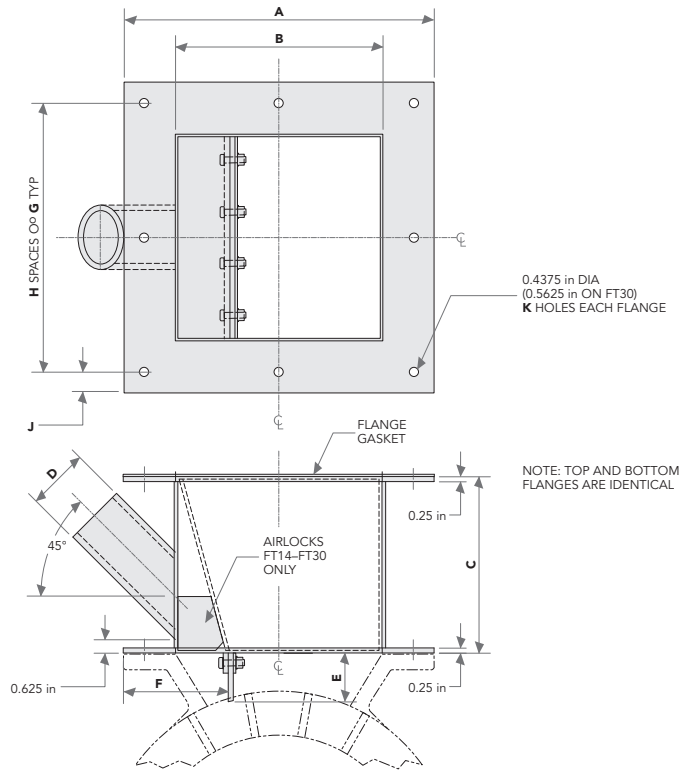


SECTION 1 ROTARY VALVES

Accessories – Vented Inlet Adapter

PRODUCT FEATURES

- For venting rotary valve “blow-by” air
- Compact vertical design
- With internal baffle and wiper kit
- Robust, heavy-duty stainless steel or carbon steel construction



Vented Inlet Adapter (VIA)

Dimensions (inches)

ROTARY VALVE FEEDER SIZE	A	B	C	D	E	F	G	H	J	K
FT7	11	6	8-1/2	3 OD	1-15/16	4-1/8	4-3/4	2	3/4	8
FT9	12	8	8-1/2	3 OD	2-1/4	4-3/8	5-1/4	2	3/4	8
FT11	13	9	8-1/2	3 OD	2-1/2	4-1/4	5-3/4	2	3/4	8
FT12	15	10	8-1/2	3 OD	2-5/8	5-1/16	6-1/2	2	1	8
FT14	17	12	8-1/2	3 OD	2-5/8	5-3/4	5-1/4	3	5/8	12
FT16	18	13	8-1/2	3 OD	2-11/16	5-3/4	5-1/2	3	3/4	12
FT18	20	15	10	4 OD	3	6	6	3	1	12
FT22	22	16	10	4 OD	2-13/16	7-1/4	5	4	1	16
FT30	31	23	10	4 OD	5-1/8	9-1/8	7	4	1-1/2	16

SAFETY NOTICE

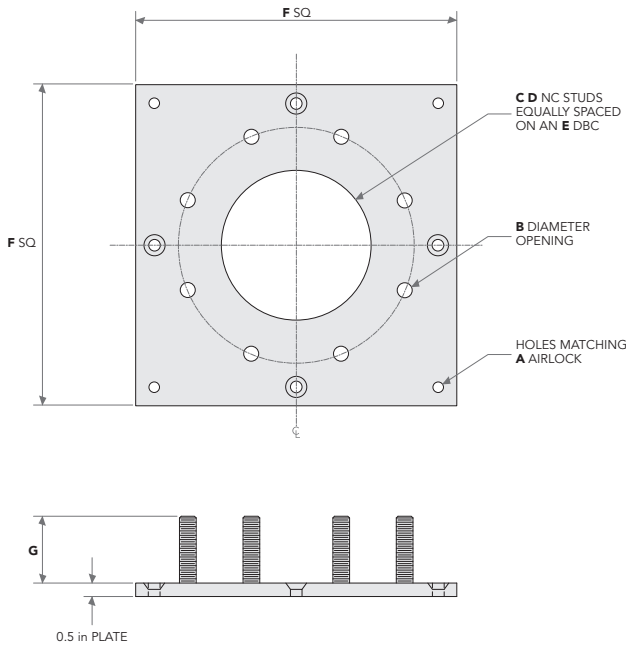
Design Engineers • Technicians • Installers

SAFETY NOTICE

The inlet and outlet of the rotary valve must have proper attachments to prevent anyone from being able to insert their hands, or foreign objects, into the valve when in operation.

SECTION 1 ROTARY VALVES

Accessories – Rotary Valve Flat Plate Adapter



PRODUCT DESCRIPTION

The purpose of the Smoot Rotary Valve Flat Plate Adapter is to be able to mount a rotary valve to existing equipment with standard Class 150 pipe flange mounting dimensions.

PRODUCT FEATURES

- Enables the rotary valve to be mounted to existing equipment
- Available in Class 150 or 1/2-inch plate flange mounting dimensions
- Constructed of 304 stainless or carbon steel

Rotary Valve Flat Plate Adapter								
Dimensions (inches)								
ROTARY VALVE FEEDER SIZE	CLASS 150 FLANGE	B ¹	C	D	E	F	G(1) for Class 150 Thick Flanges	G(2) for 0.25-inch Thick Flanges
FT7	5-inch pipe	5-1/16	8	10 x 3/4	8-1/2	11	2-1/4	1-3/4
	6-inch pipe	6-1/16	8	10 x 3/4	9-1/2	11	2-1/4	1-3/4
FT9	6-inch pipe	6-1/16	8	10 x 3/4	9-1/2	12	2-1/4	1-3/4
	8-inch pipe	8	8	10 x 3/4	11-3/4	12-3/4 ²	2-1/4	1-3/4
FT11	6-inch pipe	6-1/16	8	10 x 3/4	9-1/2	13	2-1/4	1-3/4
	8-inch pipe	8	8	10 x 3/4	11-3/4	13	2-1/4	1-3/4
FT12	8-inch pipe	8	8	10 x 3/4	11-3/4	15	2-1/4	1-3/4
	10-inch pipe	10	12	9 x 7/8	14-1/4	15-3/4 ²	2-5/8	2
FT14	10-inch pipe	10	12	9 x 7/8	14-1/4	17	2-5/8	2
	12-inch pipe	12	12	9 x 7/8	17	18-3/4 ²	2-5/8	2
FT16	10-inch pipe	10	12	9 x 7/8	14-1/4	18	2-5/8	2
	12-inch pipe	12	12	9 x 7/8	17	18-1/2 ²	2-5/8	2
FT18	12-inch pipe	12	12	9 x 7/8	17	20	2-5/8	2
	14-inch pipe	13-1/4	12	8 x 1	18-3/4	20-1/2 ²	2-3/4	2
FT22	14-inch pipe	13-1/4	12	8 x 1	18-3/4	22	2-3/4	2
	16-inch pipe	15-1/4	16	8 x 1	21-1/4	23	2-3/4	2
FT30	18-inch pipe	17-1/4	16	7 x 1-1/8	22-3/4	31	3-1/4	2-1/4
	20-inch pipe	19-1/4	20	7 x 1-1/8	25	31	3-1/4	2-1/4

¹Opening is based on the I.D. of Sch40 pipe for 5-inch through 10-inch and of standard weight pipe on 12-inch through 20-inch.

²These flanges are slightly larger than the rotary valve flange to accommodate a larger Class 150 flange.

SAFETY NOTICE

The inlet and outlet of the rotary valve must have proper attachments to prevent anyone from being able to insert their hands, or foreign objects, into the valve when in operation.

Design Engineers • Technicians • Installers

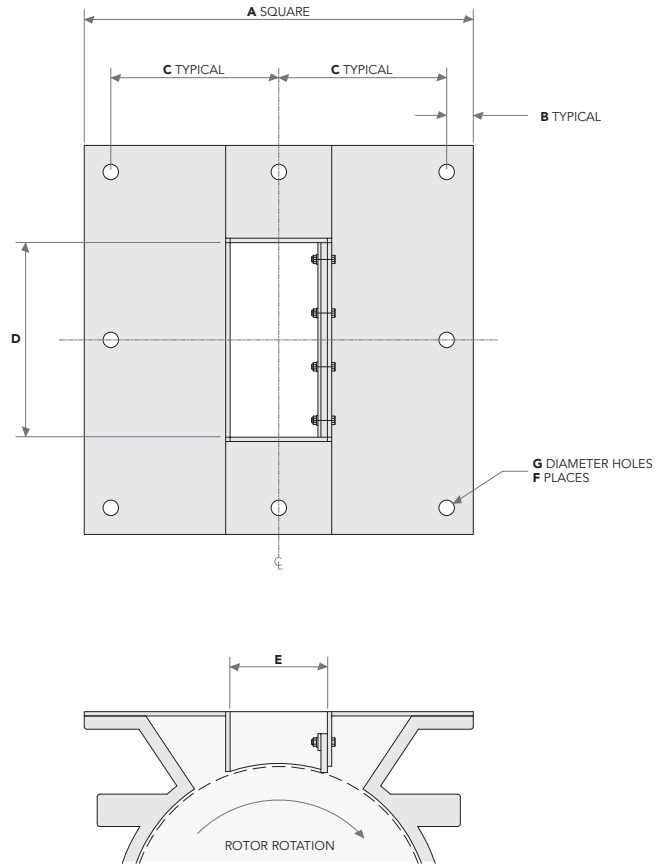
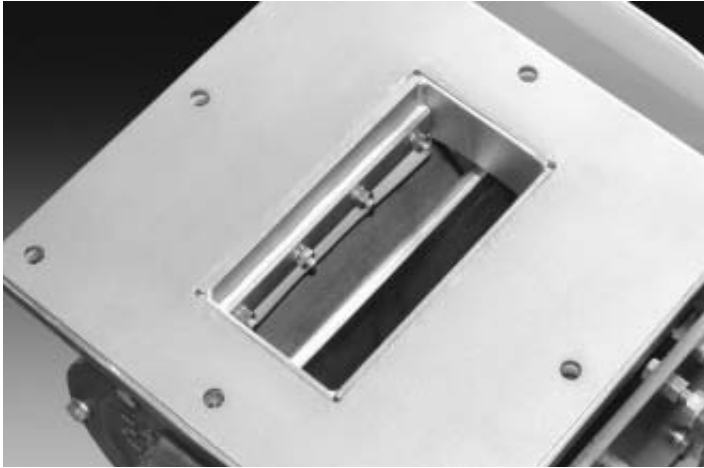
SAFETY NOTICE

SECTION 1 ROTARY VALVES

Accessories – Non-Adjustable Flow Pellet Valve

PRODUCT FEATURES

- Prevents product shear (between rotor tip and housing)
- Constructed of 304 stainless or carbon steel



Non-Adjustable Flow Pellet Valve							
Dimensions (inches)							
ROTARY VALVE FEEDER SIZE	A	B	C	D	E	F	G
FT7	11	3/4	4-3/4	5-1/2	2-3/4	8	7/16
FT9	12	3/4	5-1/4	7-1/4	3-3/4	8	7/16
FT11	13	3/4	5-3/4	8	4-3/4	8	7/16
FT12	15	1	6-1/2	9	4-3/4	8	7/16
FT14	17	5/8	5-1/4	11	5-3/4	12	7/16
FT16	18	3/4	5-1/2	11-3/4	7-3/4	12	7/16
FT18	20	1	6	13-3/4	8-3/4	12	7/16
FT22	22	1	5	14-3/4	9-3/4	16	7/16
FT30	31	1-1/2	7	20-1/2	14	16	9/16

SAFETY NOTICE

Design Engineers • Technicians • Installers

SAFETY NOTICE

The inlet and outlet of the rotary valve must have proper attachments to prevent anyone from being able to insert their hands, or foreign objects, into the valve when in operation.

SECTION 1 ROTARY VALVES

Accessories – Discharge Adapter (Straight Thru)

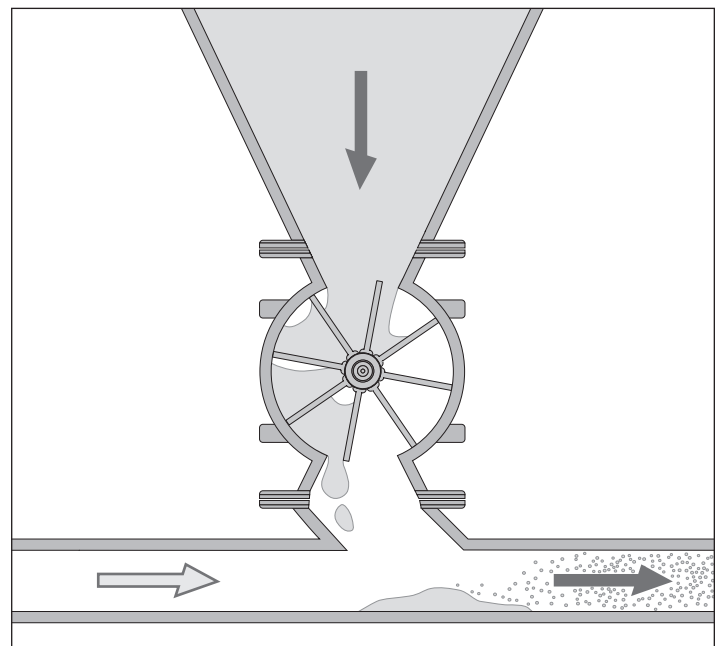
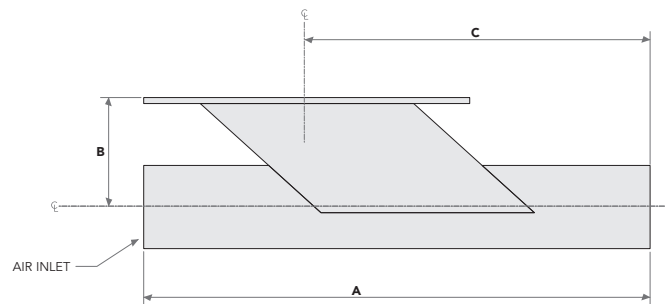
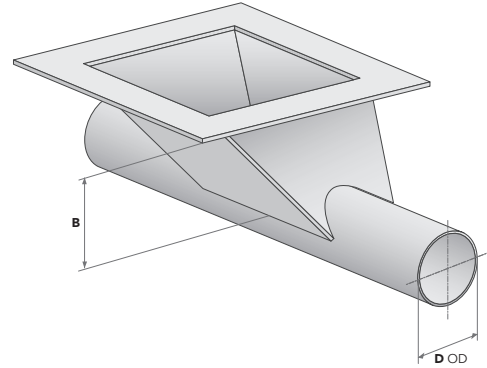
Discharge Adapter (Straight Thru) Dimensions (inches)									
D (OD)	FT7			FT9			FT11		
	A	B	C	A	B	C	A	B	C
1-1/2 pipe	19-7/8	4-1/4	13-3/4	—	—	—	—	—	—
2 tube	20-3/8	4	13-1/2	22-3/8	5-1/2	16-1/4	23-3/8	6-3/8	17-3/4
2-3/8 pipe	20-3/4	3-3/4	13-1/2	22-3/4	5-1/2	16-1/8	23-3/4	6-3/8	17-1/2
3 tube	21-3/8	3-5/8	14-1/8	23-3/8	4-1/2	15-3/4	24-3/8	5-3/8	17-1/4
3-1/2 pipe	21-7/8	4-1/8	14-7/8	23-7/8	4-1/2	15-3/4	24-7/8	5-3/8	17
4 tube	22-3/8	4-1/8	15	24-3/8	4-1/4	16-1/4	25-3/8	4-3/8	16-3/4
4-1/2 pipe	22-7/8	4-1/2	15-5/8	24-7/8	4-3/8	16-5/8	25-7/8	4-3/8	17-1/4
5 tube	23-3/8	4-3/4	16-1/4	25-3/8	4-3/4	17-1/4	26-3/8	4-5/8	17-3/4
5-9/16 pipe	23-7/8	5-3/8	17-1/8	25-7/8	5-1/4	18	27	4-7/8	18-1/4
6 tube	24-3/8	5-3/4	17-3/4	26-3/8	5-3/8	18-3/8	27-3/8	5-1/8	18-3/4
6-5/8 pipe	—	—	—	27	5-3/8	18-5/8	28	5-1/2	19-3/8
8 tube	—	—	—	20-3/8	5-3/4	19-3/4	29-3/8	6-1/8	20-3/4
8-5/8 pipe	—	—	—	—	—	—	30	6-1/2	21-3/8

Discharge Adapter (Straight Thru) Dimensions (inches)									
D (OD)	FT12			FT14			FT16		
	A	B	C	A	B	C	A	B	C
3 tube	25-3/8	6-1/2	18-5/8	27-3/8	8	21-3/8	—	—	—
3-1/2 pipe	25-7/8	6-1/4	18-3/8	27-7/8	8	21-1/8	—	—	—
4 tube	26-3/8	5-1/2	18-1/8	28-3/8	7	20-7/8	29-3/8	7-7/8	22-1/8
4-1/2 pipe	26-7/8	5-1/4	17-7/8	28-7/8	7	20-5/8	29-7/8	7-7/8	21-7/8
5 tube	27-3/8	4-5/8	18-1/4	29-3/8	6	20-3/8	30-3/8	6-7/8	21-5/8
5-9/16 pipe	28	4-7/8	18-3/4	30	6	20	30-7/8	6-7/8	21-1/4
6 tube	28-3/8	5-1/4	19-1/4	30-3/8	5-1/8	20-1/4	31-3/8	5-7/8	21-1/8
6-5/8 pipe	29	5-1/2	19-7/8	31	5-1/2	20-3/4	32	5-5/8	21-3/8
8 tube	30-3/8	6-1/8	21-1/4	32-3/8	6-1/8	22-1/4	33-3/8	6-3/8	22-3/4
8-5/8 pipe	31	6-1/2	21-7/8	33	6-1/2	22-7/8	34	6-5/8	23-3/8
10 tube	—	—	—	34-3/8	7-1/8	24-1/4	35-3/8	7-1/4	24-3/4
10-3/4 pipe	—	—	—	35-1/8	7-1/2	25	36	7-5/8	25-1/2
12 tube	—	—	—	—	—	—	37-3/8	8-7/8	27-1/4
12-3/4 pipe	—	—	—	—	—	—	38	8-1/4	27

Discharge Adapter (Straight Thru) Dimensions (inches)									
D (OD)	FT18			FT22			FT30		
	A	B	C	A	B	C	A	B	C
4-1/2 pipe	32	9-9/16	24-3/4	33	10-3/8	27-11/16	—	—	—
5 tube	32-1/2	8-3/4	24-1/2	33-3/8	9-1/2	25-3/4	48	15	35
5-9/16 pipe	33-1/4	8-9/16	24-1/4	33-7/8	9-7/16	25-3/8	—	—	—
6 tube	33-1/2	7-3/4	24	34-3/8	8-1/2	25-1/4	48	14-3/4	34
6-5/8 pipe	33-5/8	7-9/16	23-5/8	35	8-7/16	24-7/8	48	14-1/2	34
8 tube	33-5/8	6	23-3/4	36-3/8	6-5/8	24-1/4	48	12-3/4	32-7/16
8-5/8 pipe	36-3/16	6-3/8	24-7/16	37	6-9/16	24-7/8	48	12-1/2	32-7/16
10 tube	37-1/2	7	25-3/4	39-3/8	7-3/8	26-3/8	48	10-3/4	31-1/8
10-3/4 pipe	38-1/4	7-3/8	26-1/2	39	7-3/4	27-1/8	48	10-1/2	31-1/8
12 tube	39-1/2	8	27-3/4	40-3/8	8-3/8	28-1/4	48	8-3/4	30-11/16
12-3/4 pipe	40-1/4	8-3/8	28-1/2	41	8-1/2	28-7/8	48	8-1/2	30-15/16

PRODUCT FEATURES

- Constructed of aluminum, carbon steel, or stainless steel
- Straight Thru design effectively directs material away from rotor pocket



SAFETY NOTICE

The inlet and outlet of the rotary valve must have proper attachments to prevent anyone from being able to insert their hands, or foreign objects, into the valve when in operation.

Design Engineers • Technicians • Installers

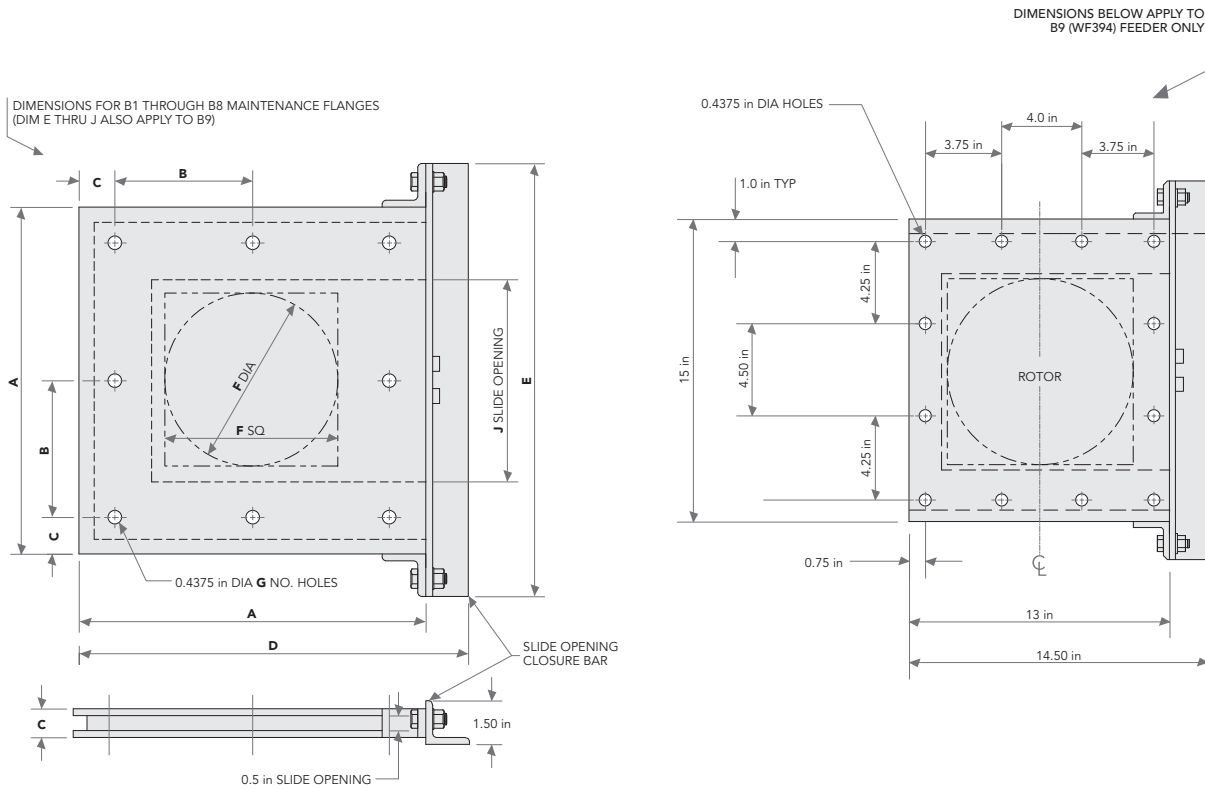
SAFETY NOTICE

SECTION 1 ROTARY VALVES

Accessories – Maintenance Flange (Gate)

PRODUCT FEATURES

- Enables the stopping of material flow so downstream equipment can be removed
- Constructed of aluminum, carbon steel, or 304 stainless steel



Maintenance Flange (Gate)									
Dimensions (inches)									
ROTARY VALVE FEEDER SIZE	A	B	C	D	E	F	G	H	J
FT7	12	4-3/4	1-1/4	13-1/2	15	6	8	1	7
FT9	13	5-1/4	1-1/4	14-1/2	16	8	8	1	9
FT11	14	5-3/4	1-1/4	15-1/2	17	9	8	1	10
FT12	16	6-1/2	1-1/2	17-1/2	19	10	8	1	11
FT14	18	5-1/4	1-1/8	19-1/2	21	12	12	1	13
FT16	19	5-1/2	1-1/4	20-1/2	22	13	12	1	14
FT18	21	6	1-1/2	22-1/2	24	15	12	1	16
FT22	23	5	1-1/2	24-1/2	26	16	16	1	17
FT30	31	7	1-1/2	32-1/2	34	23	16	1	24-1/2

SAFETY NOTICE

Design Engineers • Technicians • Installers

SAFETY NOTICE

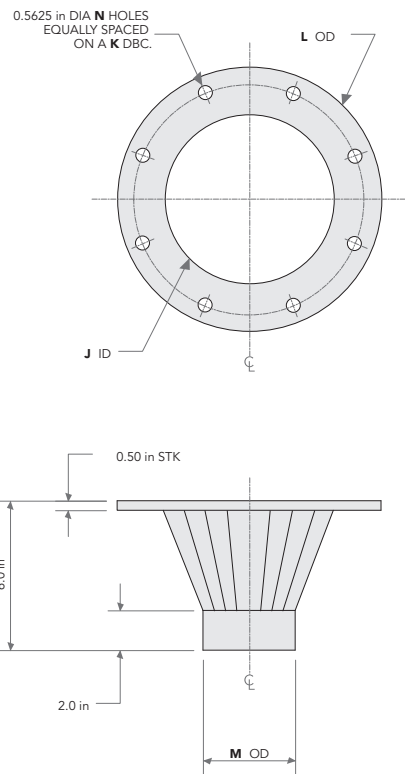
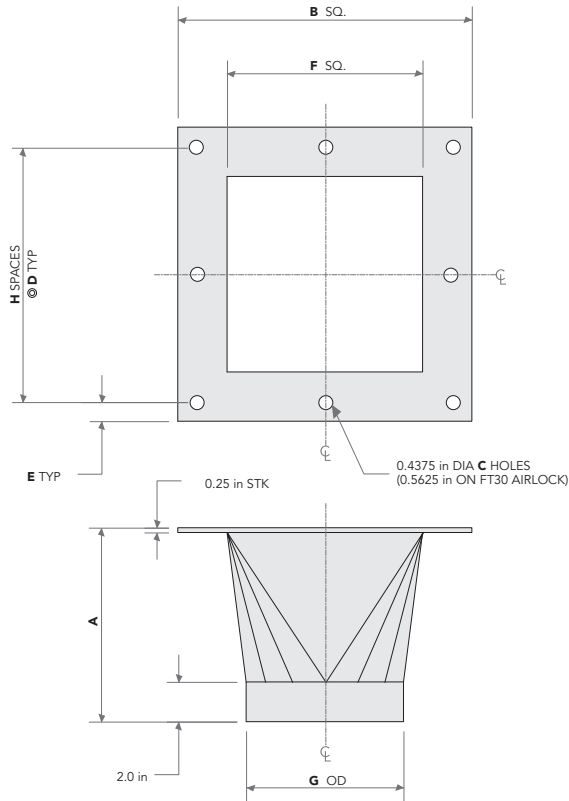
The inlet and outlet of the rotary valve must have proper attachments to prevent anyone from being able to insert their hands, or foreign objects, into the valve when in operation.

SECTION 1 ROTARY VALVES

Accessories – Discharge Transitions

PRODUCT FEATURES

- Available in round ANSI Class 150 pipe flange dimensions with 9/16-inch bolting or standard ANSI hole diameter
- Available in rotary valve square flange dimensions
- Constructed of carbon steel, stainless steel or aluminum
- Available in customer specified lengths



Rotary Valve Flange								
SIZE	A	B	C	D	E	F	G	H
FT7	6	11	8	4-3/4	3/4	6	6,5,4	2
FT9	7-3/4	12	8	5-1/4	3/4	8	8,6,5	2
FT11	8-1/8	13	8	5-3/4	3/4	9	10,8,6	2
FT12	9-1/8	15	8	6-1/2	1	10	10,8,6	2
FT14	10	17	12	5-1/4	5/8	12	12,10,8	3
FT16	9-1/2	18	12	5-1/2	3/4	13	14,12,10	3
FT18	10	20	12	6	1	15	16,14,12	3
FT22	11-1/2	22	16	5	1	16	16,14,12	4
FT30	14-3/4	31	16	7	1-1/2	23	24,20,18	4

Round Flange					
SIZE	J	K	L	M	N
6-in ASA	6	9-1/2	11	5,4	8
8-in ASA	8	11-3/4	13-1/2	6,5	8
10-in ASA	10	14-1/4	16	8,6	12
12-in ASA	12	17	19	10,8	12
14-in ASA	14	18-3/4	21	12,10	12
16-in ASA	16	21-1/4	23-1/2	14,12	16
18-in ASA	18	22-3/4	25	16,14	16
20-in ASA	20	25	27-1/2	18,16	20
24-in ASA	24	29-1/2	32	20,18	20

SAFETY NOTICE

Design Engineers • Technicians • Installers

SAFETY NOTICE

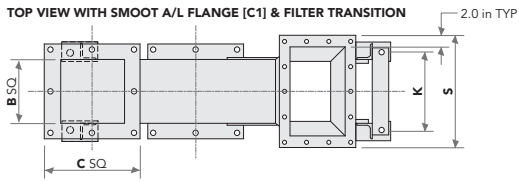
The inlet and outlet of the rotary valve must have proper attachments to prevent anyone from being able to insert their hands, or foreign objects, into the valve when in operation.

SECTION 1 ROTARY VALVES

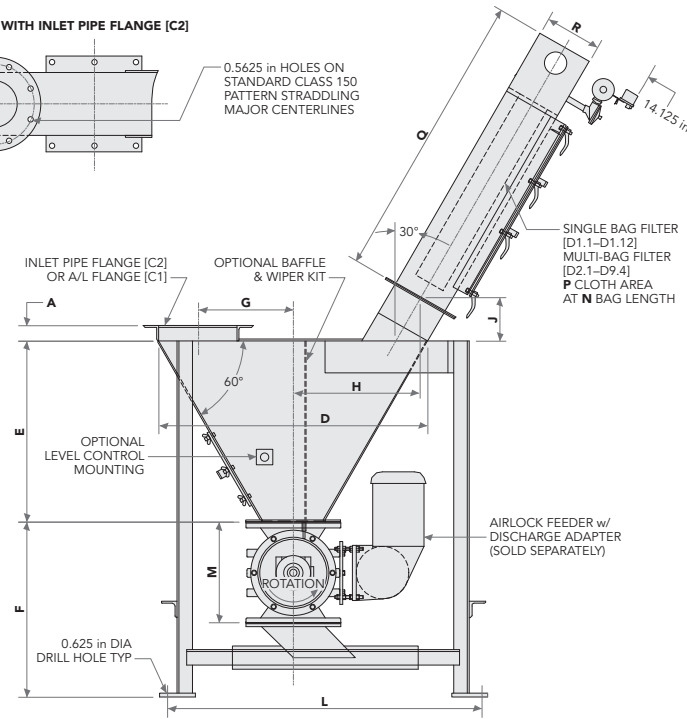
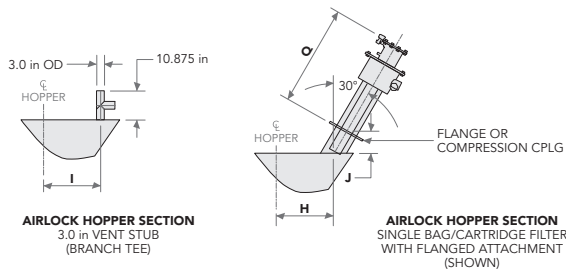
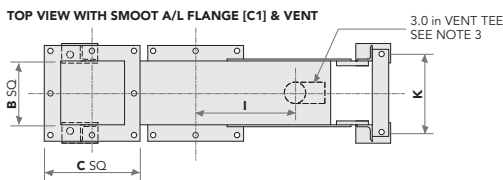
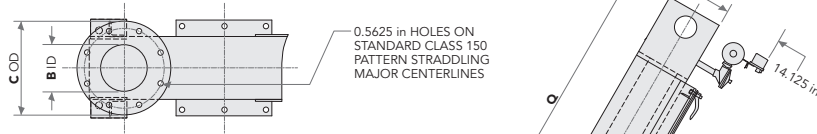
Accessories – Rotary Valve Feeder Inlet Hopper

PRODUCT FEATURES

- Constructed of aluminum, carbon steel or 304 stainless steel
- Isolated chamber vents rotary feeder “blow-by” air away from product feed, and prevents material bridging
- Dust laden “blow-by” air can be evacuated by existing dust collection systems, sock type filter, or stand alone reverse pulse jet unit
- May be used with one (1) or two (2) rotary valves



PARTIAL TOP VIEW WITH INLET PIPE FLANGE [C2]



Rotary Valve Feeder Inlet Hopper Dimensions (inches)

ROTARY VALVE FEEDER SIZE	NUMBER OF BAGS	INLET FLANGES							D	E	F	G		H	I	J	K	L	M
		Pipe Flange			Smoot A/L Flange							A/L Flange	Pipe Flange						
		SIZE	A	B	C	A	B	C											
FT7	1	5	3-9/16	5	10	2-1/2	6-1/4	11-1/4	24-1/2	16-1/8	19	9-1/4	8-1/4	11-1/2	9	7-5/16	8-1/4	34-5/8	9-7/8
FT9	1	6	3-11/16	6	11	2	8-1/4	12-1/4	34	23	22	13-1/4	12	16-1/4	7-1/4	7-5/16	10-1/4	40-3/8	12-1/2
FT11	1	8	3-7/8	8	13-1/2	2	9-1/4	13-1/4	38-7/16	26	25	14-3/4	13-1/4	18-1/2	8-1/4	7-5/16	11-1/4	44-1/4	14-5/8
FT12	1	8	3-7/8	8	13-1/2	2-1/2	10-1/4	15-1/4	38-1/2	25	28	11-3/4	13-1/4	18-1/2	7-1/4	7-5/16	12-1/4	44-3/4	15-3/4
	17-1/2													7-1/16					
	13-1/16													13-1/16					
FT14	2	10	4-1/16	10	16	2-1/2	12-1/4	17-1/4	42-5/16	26-3/8	31-7/8	15-3/16	14-3/16	18-5/8	6-15/16	5-1/2	14-1/4	46-3/4	17-5/8
	20-1/4													11-9/16					
	16													7					
FT16	2	12	4-5/16	12	19	2-1/2	13-1/4	18-1/4	42-11/16	26	35-1/2	12-3/8	14-3/8	18-3/8	6-1/4	4-3/4	16-1/4	53-5/8	19-5/8
	20-15/16													10-3/4					
	15-3/4													6-1/4					
FT18	3	14	4-3/8	14	21	2-1/2	15-1/4	20-1/4	45-1/4	26-3/16	41-5/16	15-1/8	14-5/8	22-1/4	5-11/32	9-5/16	18-1/4	57-1/4	21-3/4
	17-7/16													7					
	19-5/8													10-13/16					
FT22	4	16	4-9/16	16	23-1/2	3	16-1/4	22-1/4	46-1/2	26-7/16	43-9/16	14-5/8	14-1/4	18-1/16	5	7	19-1/4	59-1/2	25-7/8
	19-1/16													10-1/16					
FT30	6	20	5	20	27-1/2	4	23-1/4	31-1/4	56-15/16	29-3/8	65-1/2	17	17-1/2	23-5/16	3	7	27-1/4	76-1/4	37
	19-7/8													9					

SAFETY NOTICE

Design Engineers • Technicians • Installers

SAFETY NOTICE

The inlet and outlet of the rotary valve must have proper attachments to prevent anyone from being able to insert their hands, or foreign objects, into the valve when in operation.

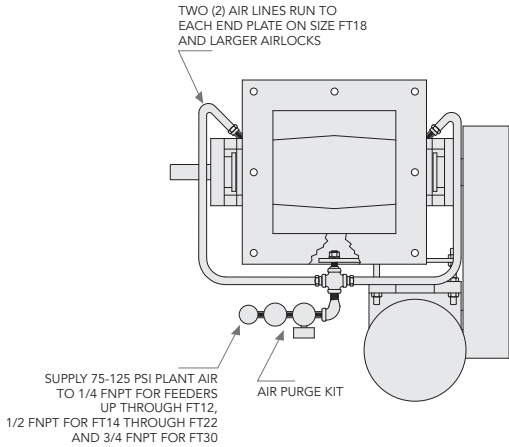
SECTION 1 ROTARY VALVES

Accessories – Shaft Air Purge

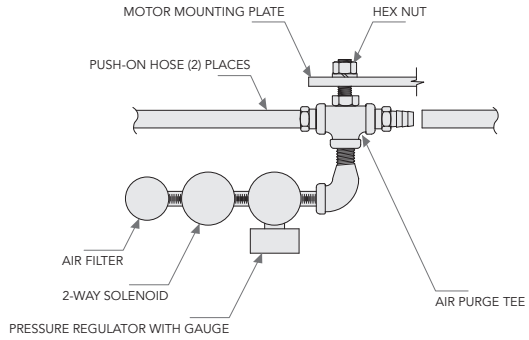


PRODUCT DESCRIPTION

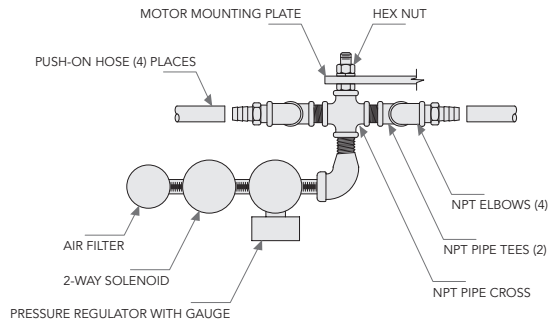
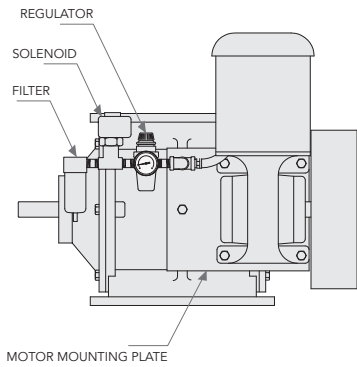
Shaft Air Purge uses high pressure plant air to prevent the material from coming in contact with the shaft seals, which extends the life of the rotary valve. Considered to be beneficial in almost all applications.



FT7 through FT16



FT18 through FT30



SAFETY NOTICE

The inlet and outlet of the rotary valve must have proper attachments to prevent anyone from being able to insert their hands, or foreign objects, into the valve when in operation.

Design Engineers • Technicians • Installers

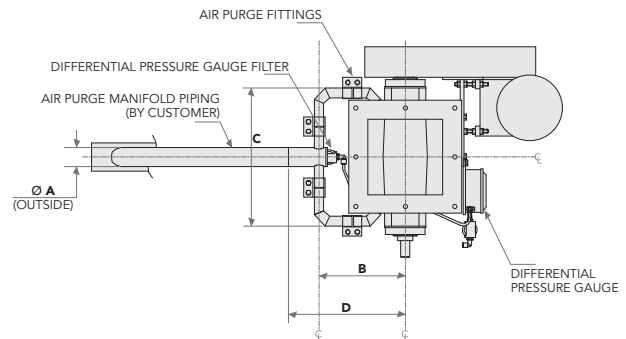
SAFETY NOTICE

SECTION 1 ROTARY VALVES

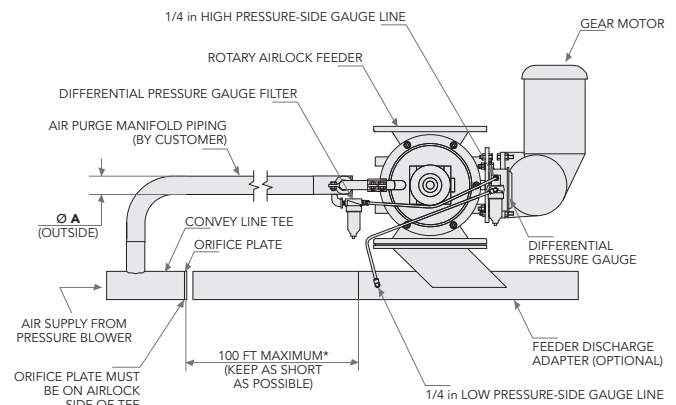
Accessories – Low Pressure Cavity Air Purge

PRODUCT DESCRIPTION

This Smoot Patented design uses low pressure air from the convey blower, and purges the material from the cavity between the closed end shroud and housing end plates. This process dramatically reduces abrasion on the rotor, cylinder, and endplates.



Low Pressure Cavity Air Purge (dimensions in inches)				
FEEDER SIZE	A AIR PURGE LINE SIZE	B	C	D
FT9	2-in tube	8-3/8	14-3/4	13-3/8
FT11	2-in tube	10-1/2	20	15-3/4
FT12	3-in tube	10-3/8	22-3/4	18-7/8
FT14	3-in tube	11-1/8	23-1/4	21-3/8
FT16	3-in tube	11-1/8	25-3/4	21-7/8
FT18	3-in tube	18-3/4	30-11/16	24-7/16
FT22	4-in tube	20-9/16	32-7/8	27-3/4



*CONSULT SMOOT IF DIMENSION REQUIREMENTS ARE GREATER THAN 100 FEET

SAFETY NOTICE

Design Engineers • Technicians • Installers

SAFETY NOTICE

The inlet and outlet of the rotary valve must have proper attachments to prevent anyone from being able to insert their hands, or foreign objects, into the valve when in operation.