



# ROTARY AIRLOCK VALVES

## DC SERIES

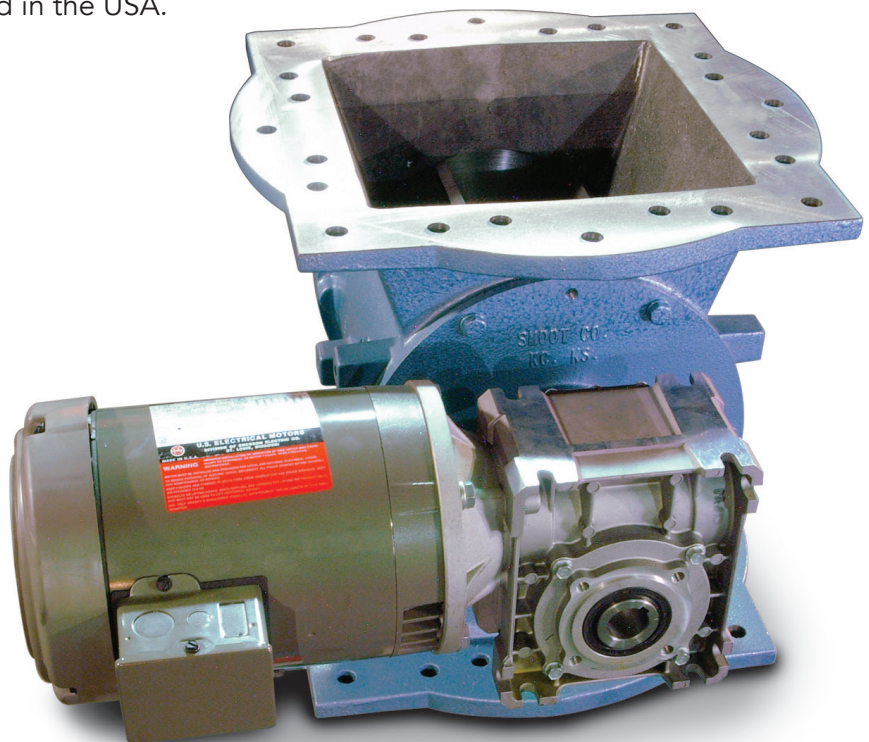
The DC Series has been completely redesigned to provide more efficient and economical solutions for all dust collection applications.

### Features

- Direct drive motor and gearbox
- New seal with integrated bearings for easy replacement
- 100% manufactured and assembled in the USA.

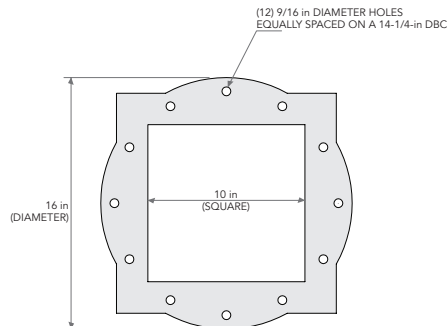
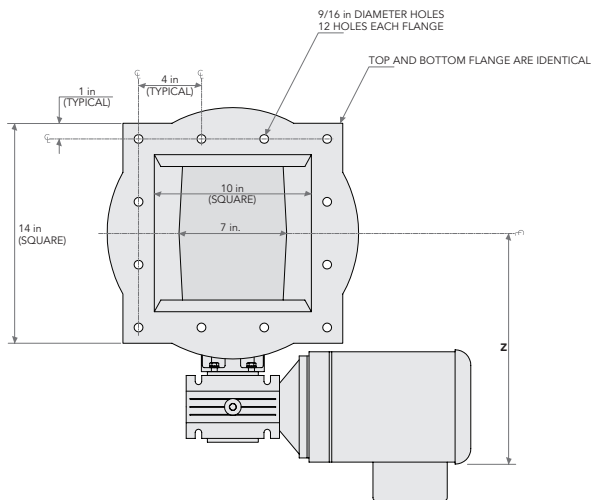
### Standard Options

- Relieved tip rotor
- Urethane wipe tip rotor
- Explosion proof motor

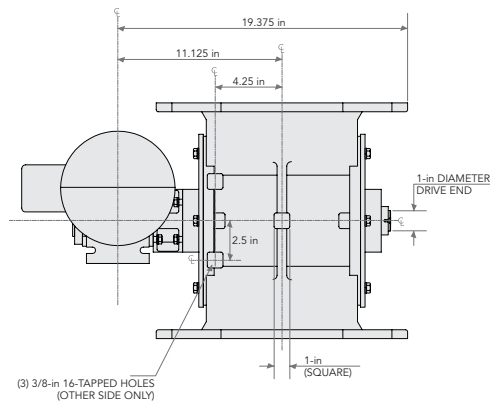
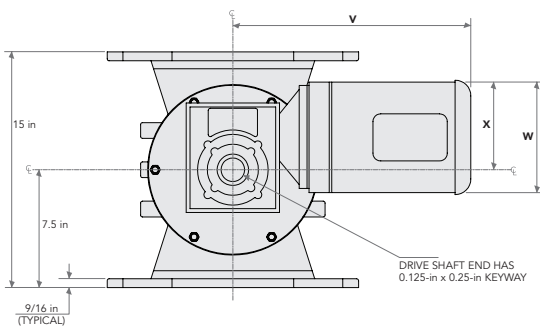


Engineering, Design & Manufacturing  
to Keep the Line Moving

# ROTARY AIRLOCK VALVES



**NOTE:**  
AIRLOCK FLANGES ARE PROVIDED WITH BOTH SQUARE AND ROUND FLANGE PATTERN DRILLING.



## MOTOR DIMENSIONS

	V	W	X	Z
<b>TEFC</b>	15-5/16	7-9/32	5-7/32	14-3/16
<b>EXP PROOF</b>	14-7/16	7-3/4	5-11/32	14-9/16

©2017 Magnum Systems, Inc. All rights reserved. Catalog number MS.4011.0917