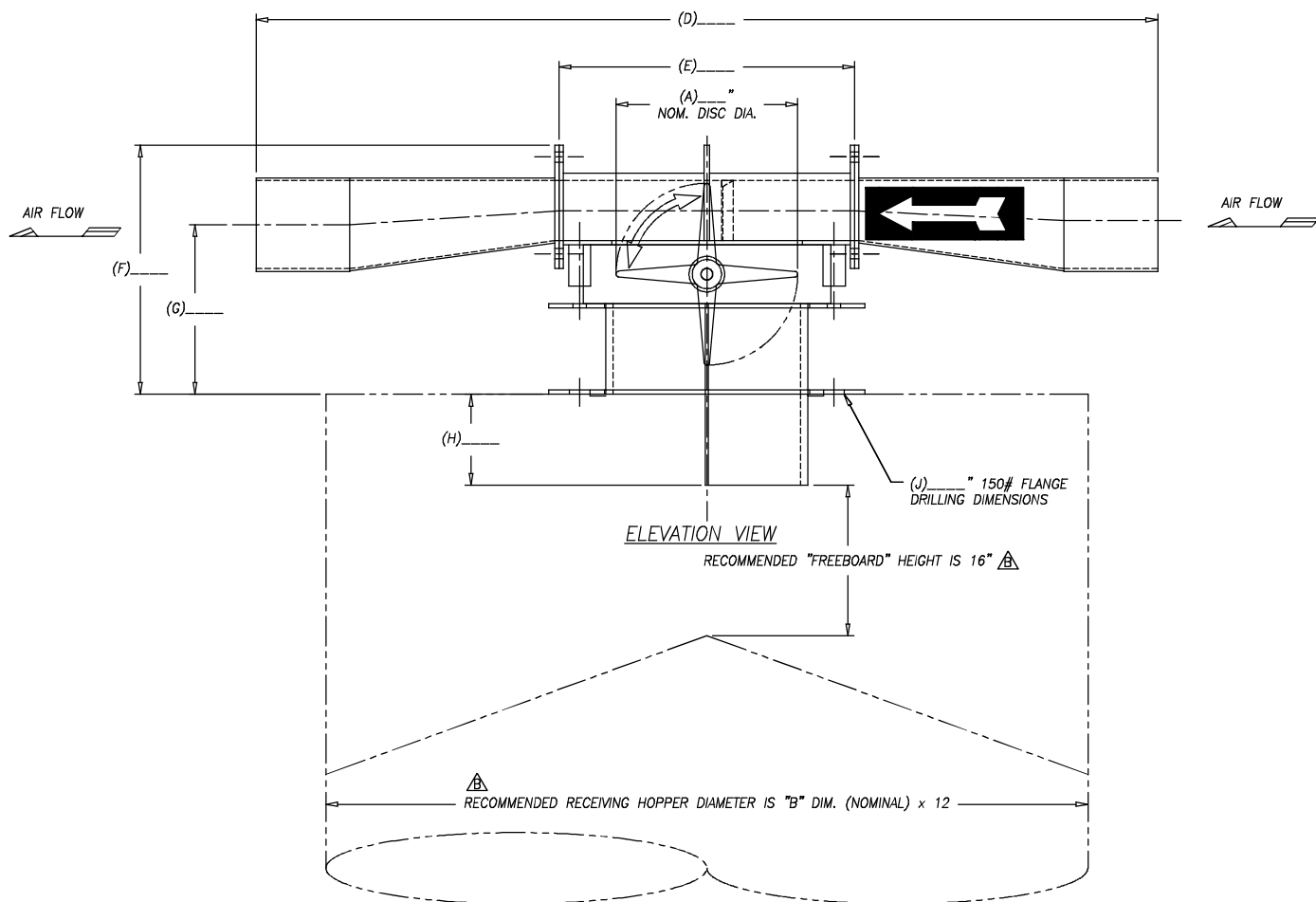


PLAN VIEW



ELEVATION VIEW

RECOMMENDED "FREEBOARD" HEIGHT IS 16" Δ

Δ RECOMMENDED RECEIVING HOPPER DIAMETER IS "B" DIM. (NOMINAL) x 12

"B" SIZE	A	B	C	D	E	F	G	H	I	J
2T	8"	2" OD	12 15/16"	38 7/16"	12 5/8"	10 5/8"	8 1/4"	3 7/8"	23 5/8"	8"
2P	8"	2 3/8" OD	12 15/16"	38 7/16"	12 5/8"	10 5/8"	8 1/8"	3 7/8"	23 5/8"	8"
3T	8"	3" OD	12 15/16"	38 7/16"	12 5/8"	10 5/8"	7 3/4"	3 7/8"	23 5/8"	8"
3P	8"	3 1/2" OD	12 15/16"	38 7/16"	12 5/8"	10 5/8"	7 9/16"	3 7/8"	23 5/8"	8"
4T	8"	4" OD	12 15/16"	38 7/16"	12 5/8"	10 5/8"	7 1/4"	3 7/8"	23 5/8"	8"
4P	8"	4 1/2" OD	12 15/16"	38 7/16"	12 5/8"	10 5/8"	7"	3 7/8"	23 5/8"	8"
5T	10"	5" OD	11 1/2"	38 7/16"	15 7/16"	11 3/4"	7 7/8"	3 7/8"	25 15/16"	10"
5P	10"	5 9/16" OD	11 1/2"	38 7/16"	15 7/16"	11 3/4"	7 3/4"	3 7/8"	25 15/16"	10"
6T	12"	6" OD	9 5/16"	38 7/16"	19 3/4"	13 15/16"	9 5/16"	7 1/8"	28 1/2"	12"
6P	12"	6 5/8" OD	9 5/16"	38 7/16"	19 3/4"	13 15/16"	9 3/16"	7 1/8"	28 1/2"	12"

A97 - B- - C- - D- - E- - F- - G- - H- - J-

MODEL DASH NUMBER	MATERIAL OF CONSTRUCTION
C1	STAINLESS STEEL
C2	CARBON STEEL

MODEL DASH NUMBER	OPERATOR TYPE
D1	AIR CYLINDER OPERATED
D2	FAST ACTING AIR CYLINDER OPERATED

MODEL DASH NUMBER	SOLENOID VALVE WITH 120 VAC. COIL
E1	SINGLE COIL, 4 WAY, NEMA 1,3,4X ENCLOSURE
E2	DOUBLE COIL, 4 WAY, NEMA 1,3,4X ENCLOSURE
E3	SINGLE COIL, 4 WAY, NEMA 7,9 ENCLOSURE
E4	DOUBLE COIL, 4 WAY, NEMA 7,9 ENCLOSURE

MODEL DASH NUMBER	LIMIT SWITCHES
F1	(2) SPDT LIMIT SWITCHES—NEMA 4X ENCLOSURE
F2	(2) DPDT LIMIT SWITCHES—NEMA 4X ENCLOSURE
F3	(2) SPDT LIMIT SWITCHES—NEMA 7 & 9 ENCLOSURE
F4	(2) DPDT LIMIT SWITCHES—NEMA 7 & 9 ENCLOSURE

MODEL DASH NUMBER	DISC CONSTRUCTION
G1	NICKEL PLATE DUCTILE IRON DISK W 416 SS SHAFT (STANDARD).
G2	ALUMINUM BRONZE DISC W 416 SS SHAFT
G3	316 STAINLESS STEEL DISC & SHAFT

MODEL DASH NUMBER	VALVE BODY CONSTRUCTION
H1	CAST IRON (STANDARD) (SEE NOTE 4)
H2	ALUMINUM BRONZE
H3	304 STAINLESS STEEL

MODEL DASH NUMBER	SEAT CONSTRUCTION	MAX. TEMP.	MIN. TEMP.
J1	EPDM (STANDARD) FOOD GRADE	+225°F	-30°F
J2	WHITE BUNA N FOOD GRADE	+180°F	+10°F
J3	VITON GF	+400°	+10°

NOTES

- ALL STANDARD SMOOTH BUTTERFLY VALVES HAVE A CAST IRON WAFER STYLE ONE PIECE BODY, UNDERCUT OR NON-UNDERCUT NICKEL PLATED DUCTILE IRON DISC, EPDM NON WHITE (FOOD GRADE) SEATS, 416 STAINLESS STEEL SHAFT. THE B.V. PRICE IS THE SAME FOR EITHER THE UNDERCUT OR NON-UNDERCUT DISC BUT IT MUST BE SPECIFIED WHICH ONE IS WANTED BY ADDING "U" FOR UNDERCUT DISC OR "N" FOR NON-UNDERCUT DISC AFTER THE "B" [BFV] SERIES MODEL DASH#. SEE NOTE 4 AND EXAMPLE BELOW.
- VALVE ALIGNMENT HOLES CONFORM TO 125-150# ASA PIPE FLANGE DIMENSIONS.
- AIR CYLINDERS REQUIRE A MIN. OF 80 PSI. PLANT AIR.
- ONLY THE DISC AND SEAT ARE IN PRODUCT CONTACT AREA. THE BODY AND SHAFT ARE NOT.

CUSTOMER _____
 CUST. P.O. NO. _____
 SMOOTH JOB NO. _____
 ITEM NO. _____
 QTY. _____
 DRAWING ISSUE _____

THIS DRAWING IS THE EXCLUSIVE PROPERTY OF SMOOTH. ITS USE WITHOUT WRITING PERMISSION IS STRICTLY PROHIBITED. IT IS TO BE RETURNED UPON REQUEST AND IS NOT TO BE REPRODUCED, COPIED, LOANED OR OTHERWISE USED IN ANY MANNER WITHOUT THE WRITING PERMISSION OF SMOOTH. SMOOTH SHALL BE RESPONSIBLE FOR ANY ERRORS OR OMISSIONS IN THIS DRAWING. SMOOTH SHALL BE RESPONSIBLE FOR ANY ERRORS OR OMISSIONS IN THIS DRAWING. SMOOTH SHALL BE RESPONSIBLE FOR ANY ERRORS OR OMISSIONS IN THIS DRAWING.



Kansas City, Kansas
 HOPPER TOP VALVE
 SERIES 2
 CUSTOMER DRAWING

DATE _____ DWG. NO. 97-10
 DWN. BY JSO APPROVED _____
 SCALE 3"=1'-0"

REVISIONS
 NO. _____
 BY _____
 DATE _____
 REMARKS _____