

**WARNING**

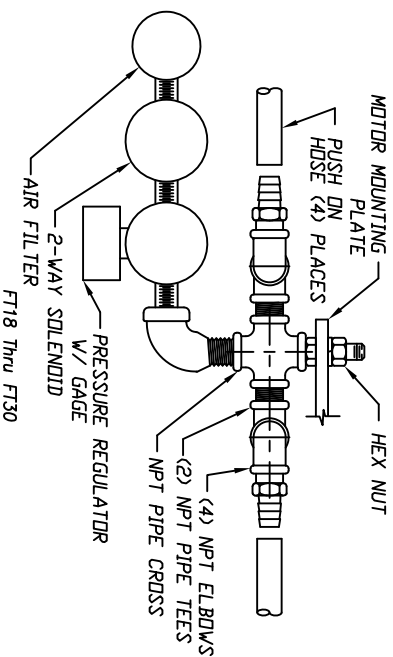
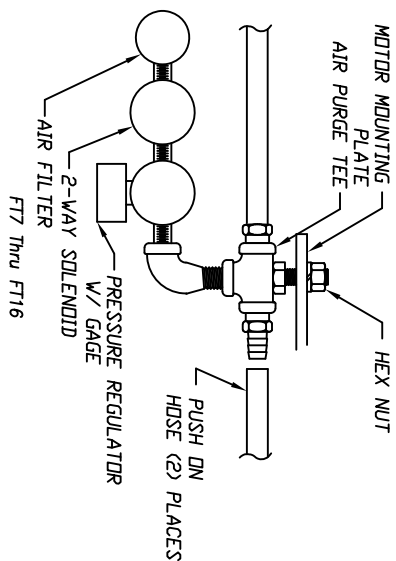
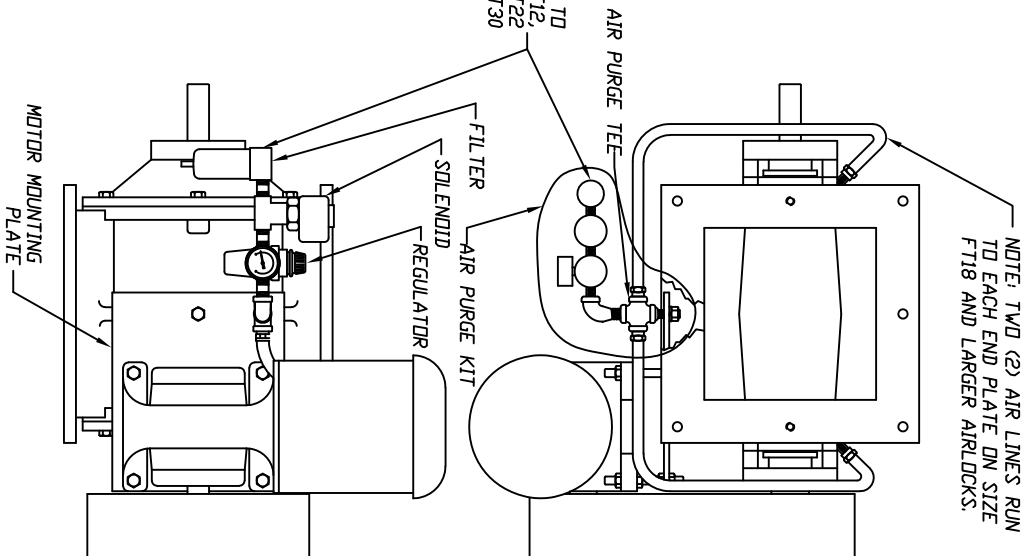
**DESIGN ENGINEERS, TECHNICIANS & INSTALLERS**

THE INLET AND OUTLET OF THE ROTARY VALVE MUST HAVE PROPER ATTACHMENTS TO PREVENT ANYONE FROM BEING ABLE TO INSERT THEIR HANDS OR ANY OTHER BODY PARTS INTO THE VALVE WHEN IN OPERATION.

- ASSEMBLY INSTRUCTIONS:**
1. OBTAIN SHAFT AIR PURGE KIT.
  2. REMOVE HEX NUT AND WASHER FROM MOUNTING STUD ON AIR PURGE TEE.
  3. INSERT MOUNTING STUD IN HOLE, LOCATED IN UPPER LEFTHAND CORNER OF MOTOR MOUNTING PLATE. TIGHTEN NUT WHILE HOLDING AIR PURGE KIT IN POSITION SHOWN (THIS ASSUMES SMOOT SUPPLIES THE DRIVE, IF SMOOT DOES NOT SUPPLY DRIVE CUSTOMER MUST USE AN ALTERNATE METHOD OF MOUNTING AIR PURGE KIT).
  4. CUT RUBBER HOSE AT APPROXIMATELY THE MIDDLE OF THE AIR PURGE TEE.
  5. SLIDE EACH END OF RUBBER HOSE OVER EXISTING FITTINGS ON AIR PURGE TEE. (NUT CLAMPS REQUIRED)
  - NOTE: (SOME FORCE IS REQUIRED AND LUBRICATING ENDS OF FITTINGS AND HOSE WITH OIL IS HELPFUL.)
  6. CONNECT HIGH PRESSURE AIR SUPPLY TO FILTER, AND WIRE SOLENOID.
  7. SET REG. 10 PSI ABOVE CONVEY LINE PRESSURE.

**TOOLS REQUIRED:** UTILITY KNIFE  
9/16" WRENCH (UP THRU FT12)  
3/4" WRENCH (FT14 AND UP)

SUPPLY 75-125 PSI PLANT AIR TO  
1/4 FNPT FOR FEEDERS UP THRU FT12,  
1/2 FNPT FOR FT14 THRU FT22  
AND 3/4 FNPT FOR FT30



THIS DRAWING IS THE EXCLUSIVE PROPERTY OF SMOOT. IT'S ACCEPTANCE CONSTITUTES AN AGREEMENT THAT IT SHALL BE REPRODUCED AS A SEPARATE COMPONENT DOCUMENT ONLY FOR THE PURPOSES OF IDENTIFICATION AND NOT FOR REPRODUCTION OR REVISIONS. NO PARTS OR COMPONENTS OR CONCEPTS EXCEPT AS EXPRESSLY AUTHORIZED IN WRITING BY SMOOT ENGINEERING THIS DOCUMENT INVALIDATES THE DRAWING AS A WHOLE. DISCREPANCIES, CONFLICTING OR REVISIONS ARE TO BE COMMUNICATED TO SMOOT COMPANY TO BE AMENDED.



1290 Shepherd St.  
Kempes City, KS 66103  
Tel Fax: 866.248.7000  
Fax: 913.582.7863

2205 14th Avenue  
Pomona, KS 67257  
Tel Fax: 888.882.9567  
Fax: 620.421.5596

SHAFT AIR PURGE  
REGULATOR TYPE  
FIELD INSTALLATION INSTRUCTIONS

CF# 1038-6-4  
REV. 4 04/11/05  
Pg. 1 of 1

DATE	6/30/92	DWG. NO.	53-19
DNW. BY	PJR	APPROVED	
SCALE	None		