



ROTARY AIRLOCK VALVES

TYPE 2 - SQUARE

Magnum Systems Type 2 airlock is designed to handle moderately abrasive materials. The Type 2 is constructed with a closed end rotor with Abrasion Resistant Tips and a cast iron housing with hard chrome cylinder bore to supply a long lasting, yet economical airlock.

DESIGNED FOR MORE ABRASIVE PRODUCTS

Features:

- Our most popular abrasion resistant rotary valve
- Construction: Cast iron housing with a hard chrome coating and cast iron end-plates
- Mild steel closed end rotor with bolt on tips - 400 Brinell (43Rc) Hardness
- HiPres Shaft Air Purge assembly, including filter, regulator, pressure gauge, NEMA 4 solenoid, hose and fittings
- Available in sizes ranging from 9" airlock (0.21CFR) to 30" airlock (9.2 CFR)
- Available with round inlet and outlet in sizes: 9" and 12"
- Compressed air purge system is standard
- Can be used as either a feeder or an airlock on any mildly abrasive material
- Standard Color: Blue or White
- Available for high temperature applications up to 500°F
- 100% manufactured and assembled in the USA.

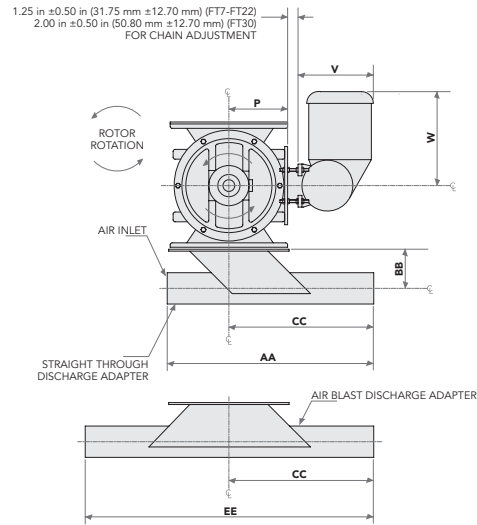
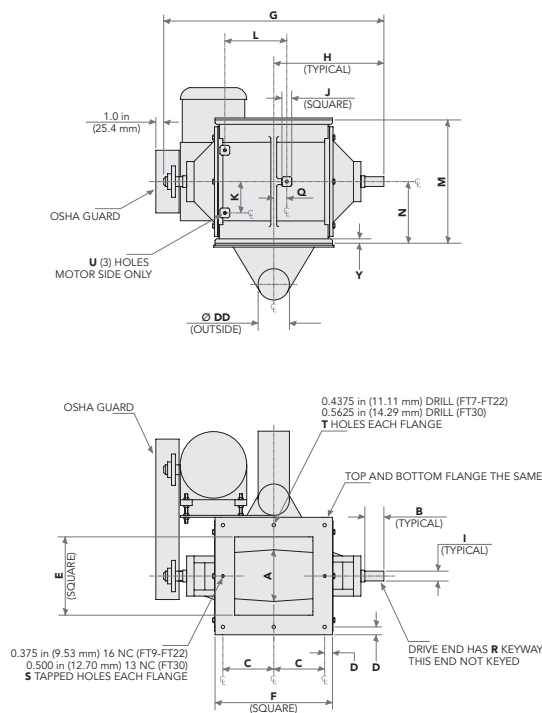
Optional Features:

- Cavity Air Purge
- Relieved tips and rotor shrouds
- High temperature modifications
- Reduced capacity rotors
- Zero speed switches
- Sand blast preparation and custom paint
- Motor mounting brackets
- Teflon coated rotors available



Engineering, Design & Manufacturing
to Keep the Line Moving

ROTARY AIRLOCK VALVES



NOTE:
CENTER MOTOR MOUNTING HOLE IS NOT ALWAYS IN CENTER
OF CYLINDER HOUSING (FT7, FT11, FT14, FT18)
SEE DIMENSION Q FOR OFFSET DISTANCE

ROTARY VALVE DIMENSIONS TYPE 2

Dimensions (inches)

	FT9	FT11	FT12	FT14	FT16	FT18	FT22	FT30
A	4-3/4	5-7/8	6-1/2	7-3/4	9	11	11-3/4	16-3/16
B	1-3/4	2	2-1/4	2-1/4	2-1/2	3-1/4	3-3/4	2-5/8
C	5-1/4	5-3/4	6-1/2	5-1/4	5-1/2	6	5	7
D	3/4	3/4	1	5/8	3/4	1	1	1-1/2
E	8	9	10	12	13	15	16	23
F	12	13	15	17	18	20	22	31
G	21-3/8	24-9/16	28-1/8	29-11/16	33-1/4	39-5/8	39-7/8	50-3/4
H	10-11/16	12-3/8	14-1/16	14-1/16	16-5/8	19-3/16	19-15/16	25-3/8
I	1	1-1/4	1-1/2	1-3/4	1-3/4	2-7/16	2-7/16	3-3/8
J	1	1-1/4	1-1/4	1-1/4	1-1/2	1-1/2	1-1/2	1-3/4
K	2-1/2	4	4	5-3/8	5-3/8	6	6	6
L	4-1/4	6-1/4	6-1/4	8	8	10-1/8	10-1/8	12-1/7
M	12-1/2	14-5/8	15-3/4	17-5/8	19-5/8	21-3/4	25-7/8	37
N	6-1/4	7-5/16	7-7/8	8-13/16	9-13/16	10-7/8	12-15/16	18-1/2

	FT9	FT11	FT12	FT14	FT16	FT18	FT22	FT30
P	6-1/4	7-1/4	7-1/2	8-7/8	10-1/8	11-9/16	13-1/4	17-1/2
Q	0	1-3/4	0	1-13/16	0	5/16	0	0
R	1/8X1/4	1/8X1/4	1/8X1/4	3/16X3/8	3/16X3/8	5/16X5/8	5/16X5/8	7/16X7/8
S	2	2	2	4	4	4	6	6
T	6	6	6	8	8	8	10	10
U	3/8-16	3/8-16	3/8-16	1/2-13	1/2-13	1/2-13	1/2-13	5/8-11
V	9/16	9/16	9/16	3/4	3/4	3/4	3/4	1
CAPACITY PER REVOLUTION								
	0.21 FT 3	0.41 FT 3	0.64 FT 3	0.96 FT 3	1.40 FT 3	2.30 FT 3	3.60 FT 3	9.20 FT 3

©2018 Magnum Systems, Inc. All rights reserved. Catalog number MS.4003.0218