



ROTARY AIRLOCK VALVES

TYPE 1 - ROUND

Magnum Systems Type 1 is a basic, yet versatile airlock. With a wide range of options and accessories, and multiple sizes in stock, the Type 1 uses an open end rotor and will operate efficiently in your system.



OUR MOST VERSATILE AIRLOCK

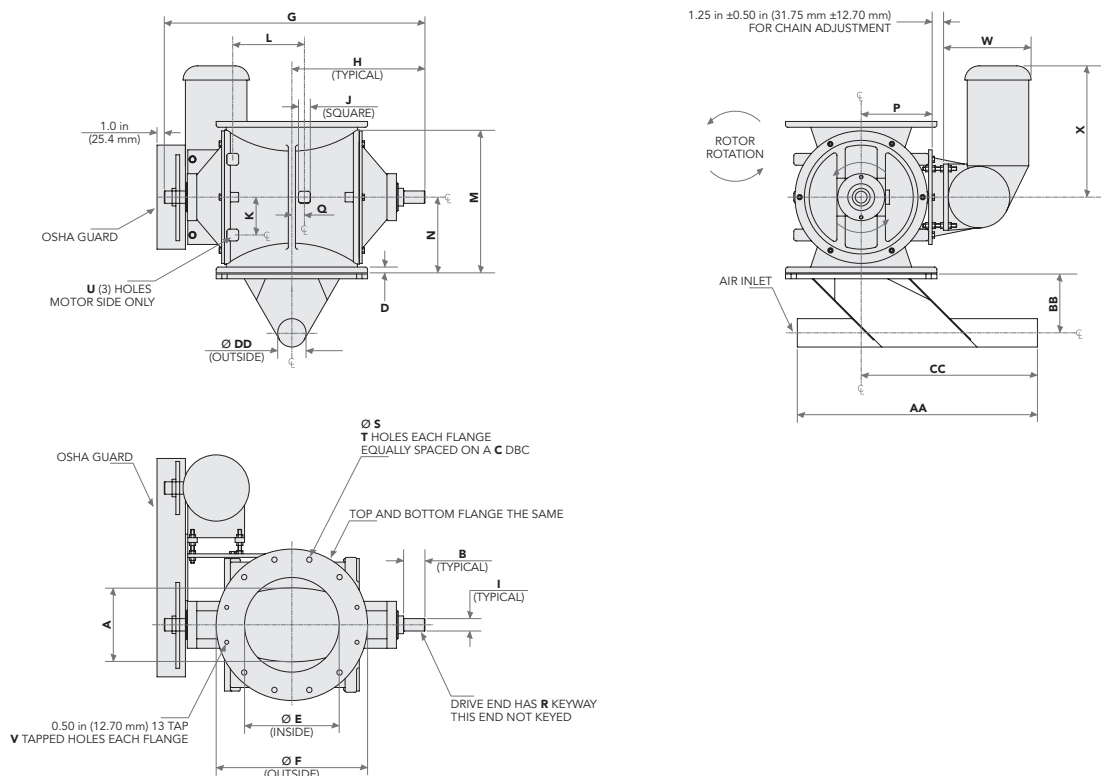
- Our most popular “bread and butter” cast iron rotary valve
- Construction:
 - + Cast iron housing and end-plates with a mild steel open end rotor
 - + Outboard bearing with three molyurethane U-cup packing rings per side.
 - + Chain and sprocket drive with guard
- Available sizes ranging from 7” airlock (0.12CFR) to 22” airlock (4.00 CFR)
- Available with round inlet and outlet in sizes: 9” and 12”
- Can be used as either a feeder or an airlock on any non-abrasive material
- Standard Color: Blue or White
- Available for high temperature applications up to 500°F
- 100% manufactured and assembled in the USA

Standard Options

- Relieved tips and vane edge rotors
- High temperature modifications
- Shaft air purge
- Replaceable tips—abrasion resistant carbon steel or urethane flex-tip
- Reduced capacity rotors
- Zero speed switches
- Sand blast preparation and custom paint
- Motor mounting brackets
- Teflon and chrome coatings available

Engineering, Design & Manufacturing
to Keep the Line Moving

ROTARY AIRLOCK VALVES



ROTARY VALVE DIMENSIONS TYPE 1
Dimensions (inches)

	FTP9	FTP12		FTP9	FTP12
A	5-3/4	7-3/4	P	6-1/4	7-1/2
B	1-3/4	2-1/4	Q	0	0
C	11-3/4	14-1/4	R	1/8X1/4	1/8X1/4
D	5/8	5/8	S	9/16	9/16
E	8	10	T	8	8
F	13-1/2	16	U	3/8-16	3/8-16
G	21-3/8	28-1/8	V	0	4
H	10-11/16	14-1/16	CAPACITY PER REV		
I	1	1-1/2		0.27 FT 3	0.75 FT 3
J	1	1-1/4			
K	2-1/2	4			
L	4-1/4	6-1/4			
M	12-7/8	15-7/8			
N	6-7/16	7-15/16			

©2017 Magnum Systems, Inc. All rights reserved. Catalog number MS.4002.1017