



ROTARY AIRLOCK VALVES

TYPE-8 - SQUARE

Magnum Systems' abrasive-resistant rotary valve Type-8 airlock is a "paramedic" valve that rescues pneumatic conveying systems that, due to bad design, changes in material, or just bad luck, tend to wear out regular valves.

It is also used as an "insurance" valve, installed in locations that are hard and expensive to get to, or used in applications in which it is expensive to shut down the system to replace a rotary valve. What makes the Type-8 our most abrasion-resistant rotary valve, is the closed-end rotor with tungsten carbide inserts on the tips and shroud. The housing is made from cast iron, but the entire bore is covered in ceramic tiles, with the leading edges having tungsten carbide inserts. The Type-8 rotary valve truly shines when coupled with our cavity air purge system on airlock applications.

TYPE-8 FEATURES

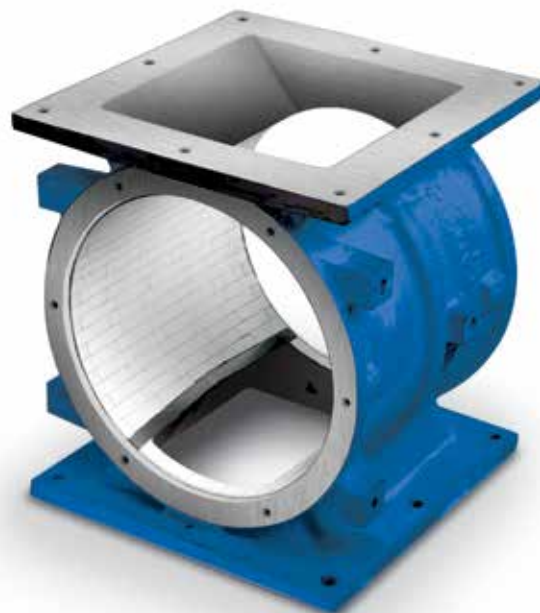
- Cast-iron housing with ceramic and tungsten carbide tiles and cast-iron end plates
- Mild steel closed-end rotor with tungsten carbide tiles on all wear surfaces
- Available sizes ranging from: Model FT-9 (0.21 CFR), to our Model FT-30 (9.2 CFR)
- Can be used as a feeder or an airlock
- 100% manufactured and assembled in the United States
- Compressed air purge system is standard
- Available with round inlets and outlets on our FTP-9 and FTP-12 Models

Optional Features

- Cavity air purge

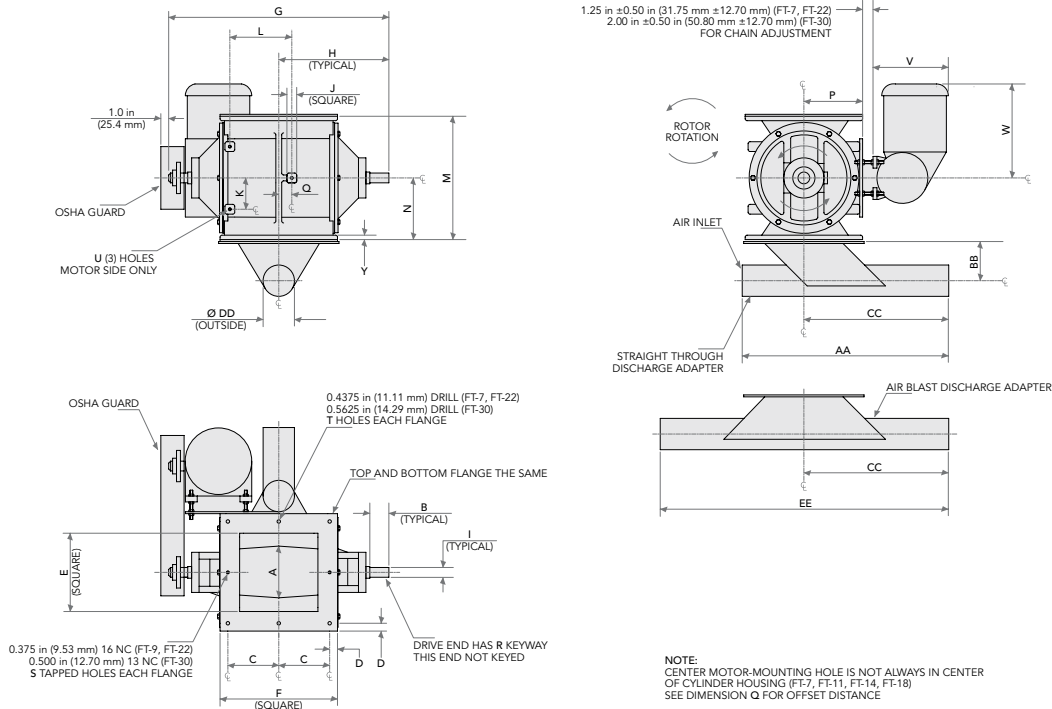
Typical applications for the Type-8 rotary valve

- Kiln dust
- Fly ash
- Portland cement
- Pebble lime
- Grout blends



One Partner For All Your Material Handling Needs.

ROTARY AIRLOCK VALVES



ROTARY VALVE DIMENSIONS TYPE-8
Dimensions (inches)

	FT-9	FT-11	FT-12	FT-14	FT-16	FT-18	FT-22	FT-30
A	4-3/4	5-7/8	6-1/2	7-3/4	9	11	11-3/4	16-3/16
B	1-3/4	2	2-1/4	2-1/4	2-1/2	3-1/4	3-3/4	2-5/8
C	5-1/4	5-3/4	6-1/2	5-1/4	5-1/2	6	5	7
D	3/4	3/4	1	5/8	3/4	1	1	1-1/2
E	8	9	10	12	13	15	16	23
F	12	13	15	17	18	20	22	31
G	21-3/8	24-9/16	28-1/8	29-11/16	33-1/4	39-5/8	39-7/8	50-3/4
H	10-11/16	12-3/8	14-1/16	14-1/16	16-5/8	19-3/16	19-15/16	25-3/8
I	1	1-1/4	1-1/2	1-3/4	1-3/4	2-7/16	2-7/16	3-3/8
J	1	1-1/4	1-1/4	1-1/4	1-1/2	1-1/2	1-1/2	1-3/4
K	2-1/2	4	4	5-3/8	5-3/8	6	6	6
L	4-1/4	6-1/4	6-1/4	8	8	10-1/8	10-1/8	12-1/7
M	12-1/2	14-5/8	15-3/4	17-5/8	19-5/8	21-3/4	25-7/8	37
N	6-1/4	7-5/16	7-7/8	8-13/16	9-13/16	10-7/8	12-15/16	18-1/2

	FT-9	FT-11	FT-12	FT-14	FT-16	FT-18	FT-22	FT-30
P	6-1/4	7-1/4	7-1/2	8-7/8	10-1/8	11-9/16	13-1/4	17-1/2
Q	0	1-3/4	0	1-13/16	0	5/16	0	0
R	1/8X1/4	1/8X1/4	1/8X1/4	3/16X3/8	3/16X3/8	5/16X5/8	5/16X5/8	7/16X7/8
S	2	2	2	4	4	4	6	6
T	6	6	6	8	8	8	10	10
U	3/8-16	3/8-16	3/8-16	1/2-13	1/2-13	1/2-13	1/2-13	5/8-11
V	9/16	9/16	9/16	3/4	3/4	3/4	3/4	1
CAPACITY PER REVOLUTION								
	0.21 FT-3	0.41 FT-3	0.64 FT-3	0.96 FT-3	1.40 FT-3	2.30 FT-3	3.60 FT-3	9.20 FT-3