



ROTARY AIRLOCK VALVES

TYPE-5

Magnum Systems' Type-5 is constructed with 316 stainless steel, uses an open-end rotor and is designed to handle extremely corrosive materials with ease.

Features

- Construction: 316 stainless steel housing and end plates with 316 stainless steel open-end rotor
- Outboard bearings with three molyurethane U-cup packing rings per side
- Chain and sprocket drive with guard
- Available in two sizes: Model FT-9 (0.27 CFR) or Model FT-12 (0.75 CFR)
- Can be used as a feeder or airlock
- 100% manufactured and assembled in the United States
- See Nedox Type-3 for additional size valves that meet food-grade requirements

Application Examples

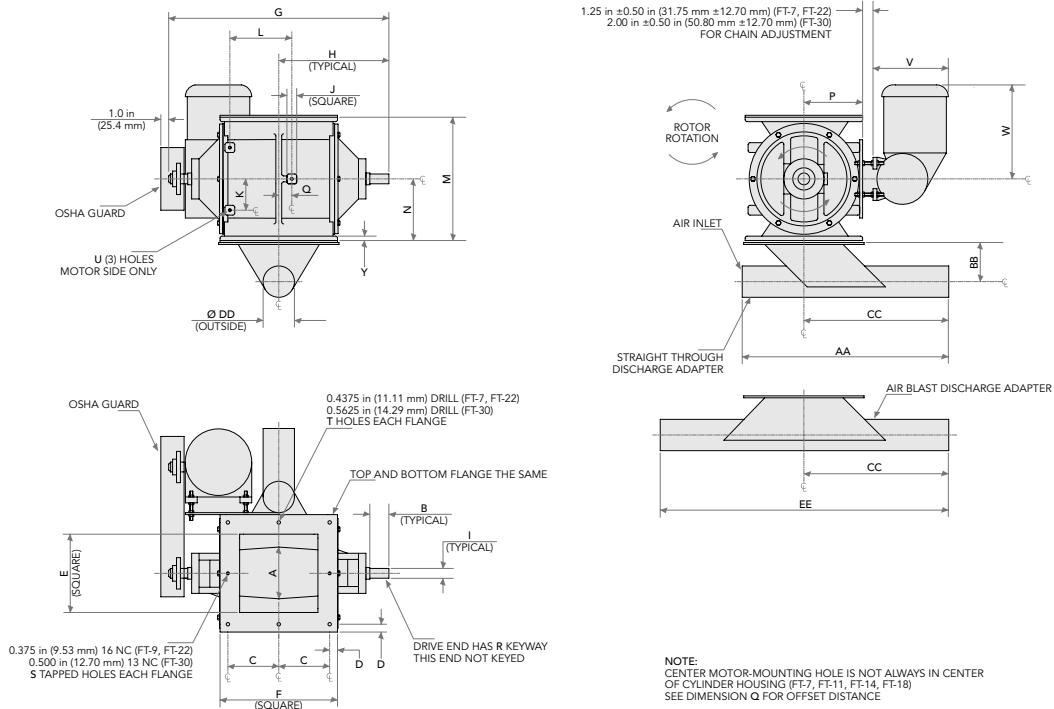
- Food-grade requiring 316SS product contact
- Areas that have caustic wash-down requirements
- Sea water environments

Optional Features

- Relieved tips and vane edge rotors
- Reduced-capacity rotors
- Zero-speed switches
- Motor-mounting brackets
- Shaft air purge



ROTARY AIRLOCK VALVES



DIMENSIONS TYPE-5

Dimensions (inches)

	FT-9	FT-12		FT-9	FT-12
A	4-3/4	6-1/2	P	6-1/4	7-1/2
B	1-3/4	2-1/4	Q	0	0
C	5-1/4	6-1/2	R	1/8X1/4	1/8X1/4
D	3/4	1	S	2	2
E	8	10	T	6	6
F	12	15	U	3/8-16	3/8-16
G	21-3/8	28-1/8	Y	9/16	9/16
H	10-11/16	14-1/16	CAPACITY PER REV		
I	1	1-1/2		0.27	0.75
J	1	1-1/4		FT-3	FT-3
K	2-1/2	4			
L	4-1/4	6-1/4			
M	12-1/2	15-3/4			
N	6-1/4	7-7/8			



©2024 Magnum Systems, Inc. All rights reserved. Catalog number MS.4008.0824



www.magnumsystems.com

Toll Free 800.748.7000 Fax 913.362.7863
7945 Flint Street, Lenexa, KS 66214