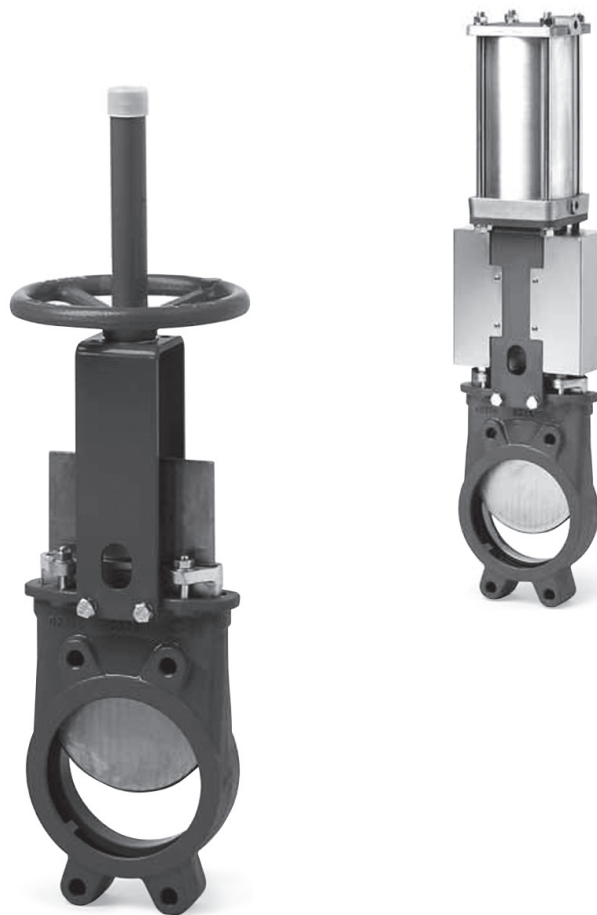


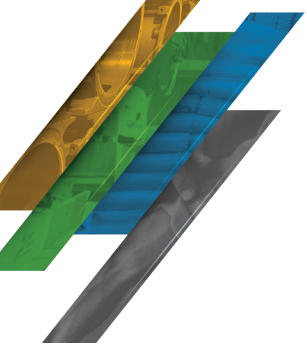
KNIFE GATE

The knife gate is designed to control a material flow in pneumatic, hydraulic, and gravity flow convey lines. Their robust design was originally designed for slurry system control in the pulp and paper industries. The shearing action of these gates will cut through most solids and columns of material when handling bulk solids, while cleaning the seat as it closes. When 100% open the knife will recess allowing product to flow freely.

Features

- Gates are available in sizes from 2 inches to 48 inches in diameter.
- CF8 (304SS), CF8M (316SS) and cast-iron body valves available.
- Designed for mounting between ANSI 150-lb flange pattern.
- Gate knife material is available in stainless steel AISI 304 and 316.
- Metal, EPDM, Viton and PTFE seats are available to handle most process requirements.
- Standard valves are supplied with a hand-wheel for manual operation.
- Optional manual operators include lever, bevel gear and chain wheels.
- Controlled automation actuators include pneumatic, electric and hydraulic.
- Control solenoid and limit switches available when required.
- Pre-plumbed and wired to a central terminal box ready for installation upon request.
- Special valve construction and configurations are available upon request.





PNEUMATIC CONVEYING VALVES

©2017 Magnum Systems, Inc. All rights reserved. Catalog number MS.4014.1017



www.magnumsystems.com

Toll Free 800.748.7000 Fax 913.362.7863

1250 Seminary Street, Kansas City, KS 66103