



ROTARY AIRLOCK VALVES

TYPE-3 - SQUARE

Magnum Systems' Type-3 is our valve with two personalities. Take a standard Type-1 airlock, change the rotor to 304 stainless steel and coat the cast-iron end plates and housing with Nedox® chrome and the rotary valve becomes both corrosion-resistant and food-grade. You get the performance of a stainless steel valve for the cost of cast iron.

CORROSION DUTY ROTARY VALVE

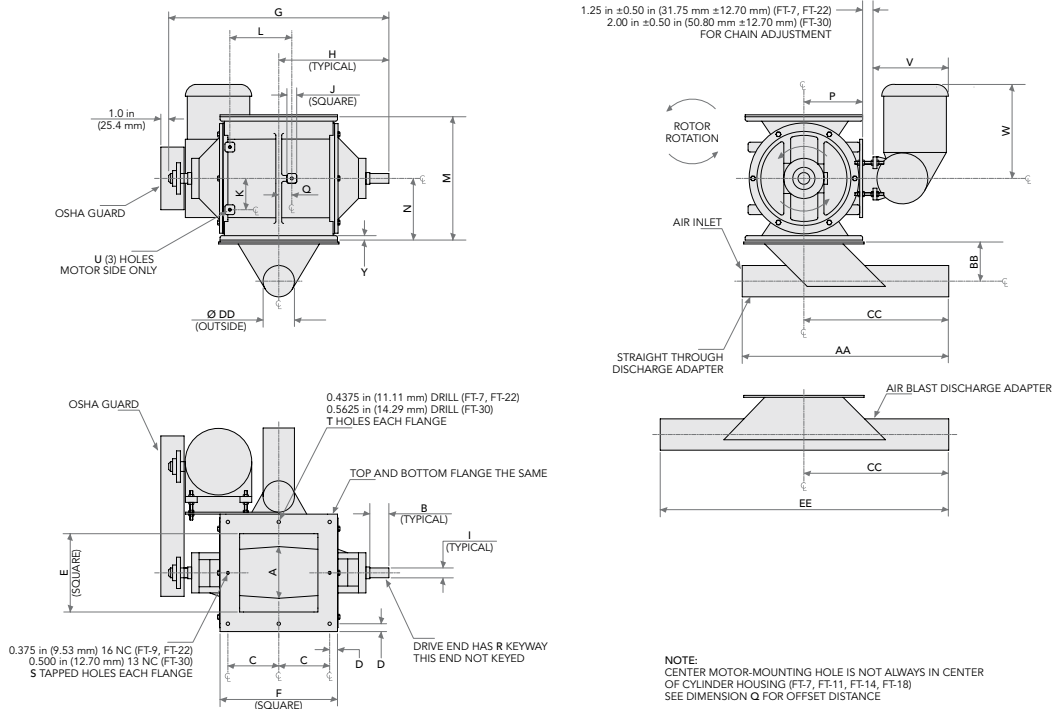
- 100% Nedox® coated cast-iron housing and end plates
 - Nedox® benefits
 - Food grade: meets FDA requirements for food contact
 - Abrasion-resistant
 - Chemical, acid, and alkaline-resistant
 - Self-lubricity, material does not adhere or build up on surfaces
- 304 stainless steel open-end rotor can be finished to meet FDA requirements for food contact
- Available in sizes ranging from our Model FT-7 (0.12 CFR) to FT-22 (4.00 CFR)
- Can be used as a feeder or airlock
- Operating temperatures from -250°F to 550°F
- 100% manufactured and assembled in the United States

Optional Features

- Relieved tips and vane edge rotors
- Replaceable stainless steel or urethane tips
- Reduced-capacity rotors
- Zero-speed switches
- Motor-mounting brackets



ROTARY AIRLOCK VALVES



ROTARY VALVE DIMENSIONS TYPE-3 Dimensions (inches)

	FT-7	FT-9	FT-11	FT-12	FT-14	FT-16	FT-18	FT-22		FT-7	FT-9	FT-11	FT-12	FT-14	FT-16	FT-18	FT-22
A	4-1/4	4-3/4	5-7/8	6-1/2	7-3/4	9	11	11-3/4	P	5-3/8	6-1/4	7-1/4	7-1/2	8-7/8	10-1/8	11-9/16	13-1/4
B	1-3/4	1-3/4	2	2-1/4	2-1/4	2-1/2	3-1/4	3-3/4	Q	1-1/18	0	1-3/4	0	1-13-16	0	5-16	0
C	4-3/4	5-1/4	5-3/4	6-1/2	5-1/4	5-1/2	6	5	R	1/8X1/4	1/8X1/4	1/8X1/4	1/8X1/4	3/16X3/8	3/16X3/8	3/16X3/8	3/16X3/8
D	3/4	3/4	3/4	1	5/8	3/4	1	1	S	--	2	2	2	4	4	4	6
E	6	8	9	10	12	13	15	16	T	8	6	6	6	8	8	8	10
F	11	12	13	15	17	18	20	22	U	3/8-16	3/8-16	3/8-16	3/8-16	1/2-13	1/2-13	1/2-13	1/2-13
G	18-3/4	21-3/8	24-9/16	28-1/8	29-11/16	33-1/4	39-5/8	39-7/8	Y	3/8	9/16	9/16	9/16	3/4	3/4	3/4	3/4
H	9-3/8	10-11/16	12-3/8	14-1/16	14-7/8	16-5/8	19-3/16	19-15/16	CAPACITY PER REVOLUTION								
I	1	1	1-1/4	1-1/2	1-3/4	1-3/4	2-7/16	2-7/16		0.12	0.27	0.47	0.75	1.10	1.60	2.60	4.00
J	1	1	1-1/4	1-1/4	1-1/4	1-1/2	1-1/2	1-1/2		FT-3	FT-3	FT-3	FT-3	FT-3	FT-3	FT-3	FT-3
K	2-1/4	2-1/2	4	4	5-3/8	5-3/8	6	6									
L	4	4-1/4	6-1/4	6-1/4	8	8	10-1/8	10-1/8									
M	9-7/8	12-1/2	14-5/8	15-3/4	17-5/8	19-5/8	21-3/4	25-7/8									
N	4-15/16	6-1/4	7-5/16	7-7/8	8-13/16	9-13/16	10-7/8	12-15/16									



©2024 Magnum Systems, Inc. All rights reserved. Catalog number MS.4005.0824



www.magnumsystems.com

Toll Free 800.748.7000 Fax 913.362.7863
7945 Flint Street, Lenexa, KS 66214