



ROTARY AIRLOCK VALVES

TYPE-2 - ROUND

Magnum Systems' Type-2 airlock is designed to handle moderately abrasive materials. The Type-2 is constructed with a closed-end rotor with abrasion resistant tips and a cast-iron housing with hard chrome cylinder bore to supply a long lasting, yet economical airlock.

DESIGNED FOR MORE ABRASIVE PRODUCTS

Features

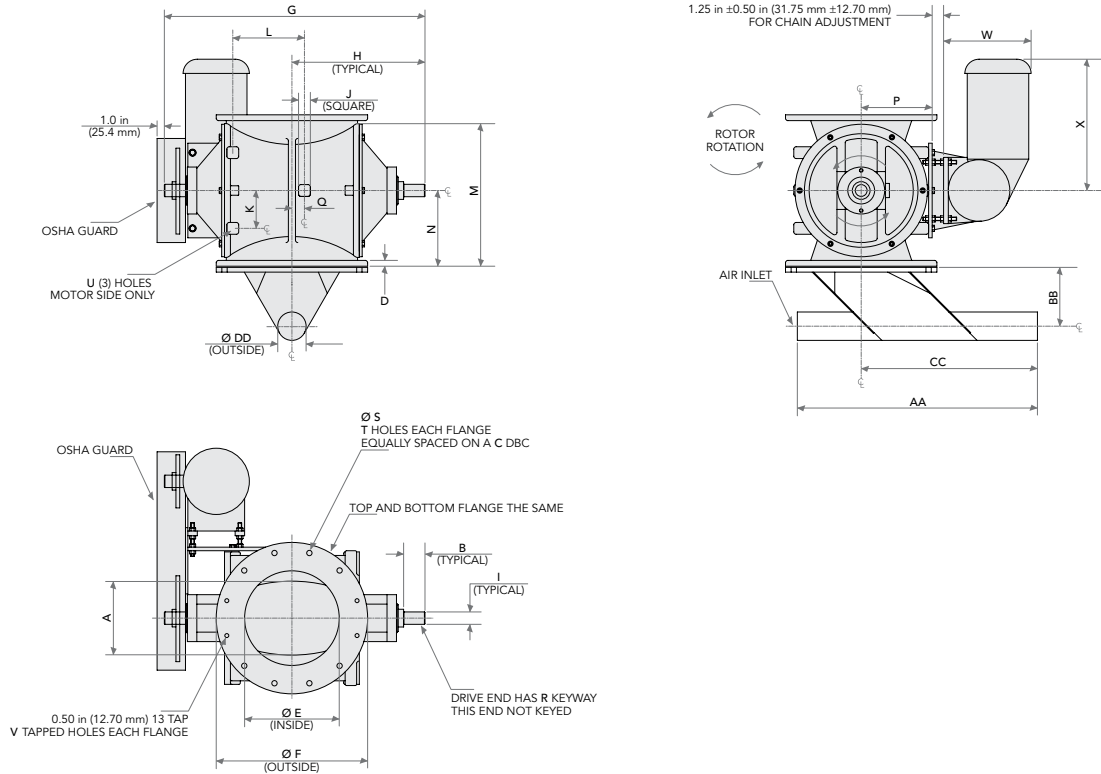
- Our most popular abrasion-resistant rotary valve
- Construction: cast-iron housing with a hard chrome coating and cast-iron end plates
- Mild steel-closed end rotor with bolt on tips - 400 Brinell (43Rc) hardness
- HiPres Shaft Air Purge assembly, including filter, regulator, pressure gauge, NEMA 4 solenoid, hose and fittings
- Available with round inlet and outlet in Models FTP-9 (0.27 CFR) and FTP-12 (0.75 CFR)
- Compressed air purge system is standard
- Can be used as a feeder or airlock on any mildly abrasive material
- Standard color: blue or white
- Available for high-temperature applications up to 500°F
- 100% manufactured and assembled in the United States

Standard Options

- Cavity air purge
- High-temperature modifications
- Reduced-capacity rotors
- Zero-speed switches
- Motor-mounting brackets



ROTARY AIRLOCK VALVES



DIMENSIONS TYPE-2

Dimensions (inches)

	FTP-9	FTP-12		FTP-9	FTP-12
A	5-3/4	7-3/4	M	12-7/8	15-7/8
B	1-3/4	2-1/4	N	6-7/16	7-15/16
C	11-3/4	14-1/4	P	6-1/4	7-1/2
D	5/8	5/8	Q	0	0
E	8	10	R	1/8X1/4	1/8X1/4
F	13-1/2	16	S	9/16	9/16
G	21-3/8	28-1/8	T	8	8
H	10-11/16	14-1/16	U	3/8-16	3/8-16
I	1	1-1/2	V	0	4
J	1	1-1/4	CAPACITY PER REV		
K	2-1/2	4		0.27 FT-3	0.75 FT-3
L	4-1/4	6-1/4			



©2024 Magnum Systems, Inc. All rights reserved. Catalog number MS.4004.0824



www.magnumsystems.com

Toll Free 800.748.7000 Fax 913.362.7863
7945 Flint Street, Lenexa, KS 66214