



SMOOT

TAYLOR

ROTARY AIRLOCK VALVES

TYPE-1 - SQUARE

Magnum Systems' Type-1 is a basic, yet versatile airlock. With a wide range of options and accessories, and multiple sizes in stock, the Type-1 uses an open-end rotor and will operate efficiently in your system.

OUR MOST VERSATILE AIRLOCK

- Our most popular bread-and-butter cast iron rotary valve
- Construction:
 - Cast-iron housing and end plates with a mild steel open-end rotor
 - Outboard bearing with three molyurethane U-cup packing rings per side
 - Chain and sprocket drive with guard
- Available sizes ranging from our Model FT-7 (0.12 CFR) to FT30 (9.9 CFR)
- Can be used as a feeder or airlock on any nonabrasive material
- Standard color: blue or white
- Available for high-temperature applications up to 500°F
- 100% manufactured and assembled in the United States

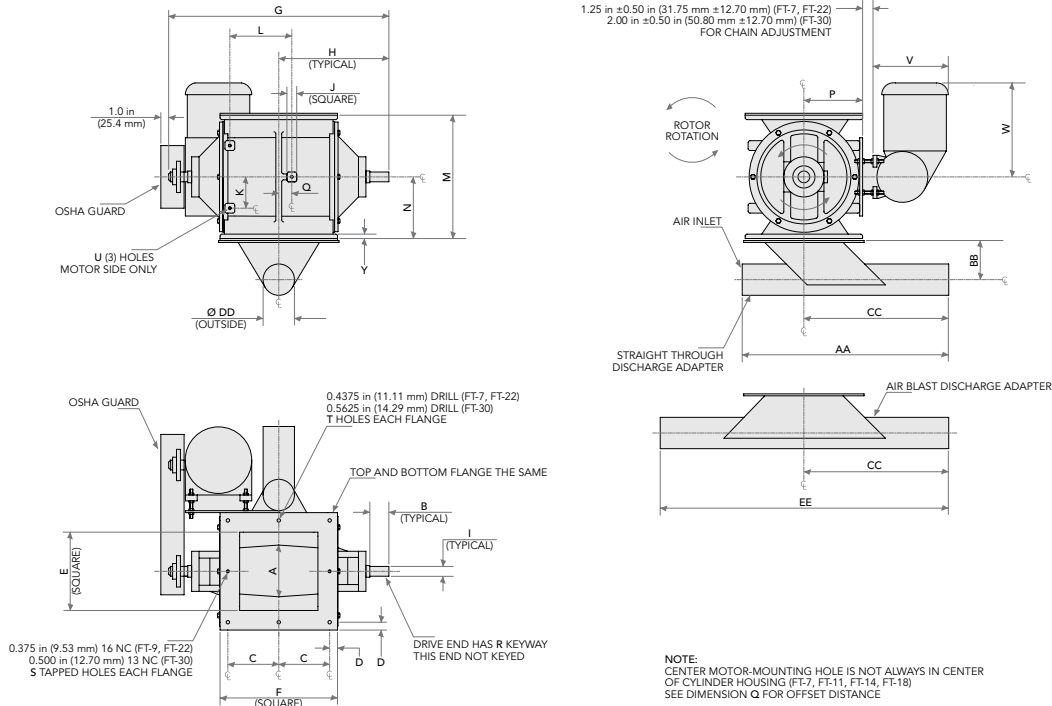
Optional Features

- Relieved tips and vane-edge rotors
- High-temperature modifications
- Shaft air purge
- Reduced-capacity rotors
- Zero speed switches
- Motor mounting brackets



One Partner For All Your Material Handling Needs.

ROTARY AIRLOCK VALVES



ROTARY VALVE DIMENSIONS TYPE-1

Dimensions (inches)

	FT-7	FT-9	FT-11	FT-12	FT-14	FT-16	FT-18	FT-22	FT-30
A	4-1/4	4-3/4	5-7/8	6-1/2	7-3/4	9	11	11-3/4	16-3/16
B	1-3/4	1-3/4	2	2-1/4	2-1/4	2-1/2	3-1/4	3-3/4	2-5/8
C	4-3/4	5-1/4	5-3/4	6-1/2	5-1/4	5-1/2	6	5	7
D	3/4	3/4	3/4	1	5/8	3/4	1	1	1-1/2
E	6	8	9	10	12	13	15	16	23
F	11	12	13	15	17	18	20	22	31
G	18-3/4	21-3/8	24-9/16	28-1/8	29-11/16	33-1/4	39-5/8	39-7/8	50-3/4
H	9-3/8	10-11/16	12-3/8	14-1/16	14-7/8	16-5/8	19-3/16	19-15/16	25-3/8
I	1	1	1-1/4	1-1/2	1-3/4	1-3/4	2-7/16	2-7/16	3-3/8
J	1	1	1-1/4	1-1/4	1-1/4	1-1/2	1-1/2	1-1/2	1-3/4
K	2-1/4	2-1/2	4	4	5-3/8	5-3/8	6	6	8
L	4	4-1/4	6-1/4	6-1/4	8	8	10-1/8	10-1/8	12-1/4
M	9-7/8	12-1/2	14-5/8	15-3/4	17-5/8	19-5/8	21-3/4	25-7/8	37
N	4-15/16	6-1/4	7-5/16	7-7/8	8-13/16	9-13/16	10-7/8	12-15/16	18-1/2

	FT-7	FT-9	FT-11	FT-12	FT-14	FT-16	FT-18	FT-22	FT-30
P	5-3/8	6-1/4	7-1/4	7-1/2	8-7/8	10-1/8	11-9/16	13-1/4	17-1/2
Q	1-1/18	0	1-3/4	0	1-13-16	0	5-16	0	0
R	1/8X1/4	1/8X1/4	1/8X1/4	1/8X1/4	3/16X3/8	3/16X3/8	3/16X3/8	3/16X3/8	7/16X7/8
S	--	2	2	2	4	4	4	6	6
T	8	6	6	6	8	8	8	10	10
U	3/8-16	3/8-16	3/8-16	3/8-16	1/2-13	1/2-13	1/2-13	1/2-13	5/8-11
Y	3/8	9/16	9/16	9/16	3/4	3/4	3/4	3/4	1
CAPACITY PER REVOLUTION									
	0.12 FT-3	0.27 FT-3	0.47 FT-3	0.75 FT-3	1.10 FT-3	1.60 FT-3	2.60 FT-3	4.00 FT-3	9.9 FT-3



©2024 Magnum Systems, Inc. All rights reserved. Catalog number MS.4001.0824



www.magnumsystems.com

Toll Free 800.748.7000 Fax 913.362.7863
7945 Flint Street, Lenexa, KS 66214