



SMOOT

TAYLOR

# ROTARY AIRLOCK VALVES

## TYPE-1 - ROUND

Magnum Systems' Type-1 is a basic, yet versatile airlock. With a wide range of options and accessories, and multiple sizes in stock, the Type-1 uses an open-end rotor and will operate efficiently in your system.

### OUR MOST VERSATILE AIRLOCK

- Our most popular bread-and-butter cast-iron rotary valve
- Construction:
  - Cast-iron housing and end plates with a mild steel open-end rotor
  - Outboard bearing with three molyurethane U-cup packing rings per side
  - Chain and sprocket-drive with guard
- Available with round inlet and outlet Models FTP-9 (0.27 CFR) and FTP-12 (0.75 CFR)
- Can be used as a feeder or airlock on any nonabrasive material
- Standard color: blue or white
- Available for high-temperature applications up to 500°F
- 100% manufactured and assembled in the United States

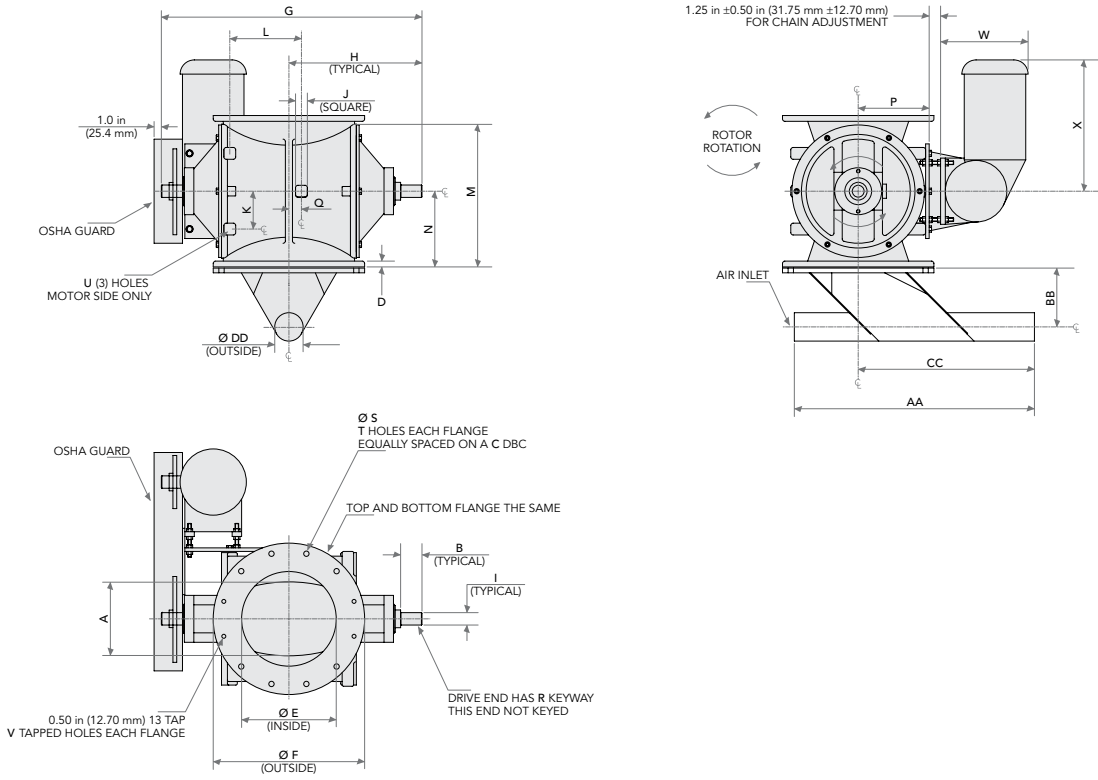
### Standard Options

- Relieved tips and vane edge rotors
- High-temperature modifications
- Shaft air purge
- Reduced-capacity rotors
- Zero-speed switches
- Motor-mounting brackets



One Partner For All Your Material Handling Needs.

# ROTARY AIRLOCK VALVES



**ROTARY VALVE DIMENSIONS TYPE-1**  
Dimensions (inches)

	FTP-9	FTP-12		FTP-9	FTP-12
<b>A</b>	5-3/4	7-3/4	<b>P</b>	6-1/4	7-1/2
<b>B</b>	1-3/4	2-1/4	<b>Q</b>	0	0
<b>C</b>	11-3/4	14-1/4	<b>R</b>	1/8X1/4	1/8X1/4
<b>D</b>	5/8	5/8	<b>S</b>	9/16	9/16
<b>E</b>	8	10	<b>T</b>	8	8
<b>F</b>	13-1/2	16	<b>U</b>	3/8-16	3/8-16
<b>G</b>	21-3/8	28-1/8	<b>V</b>	0	4
<b>H</b>	10-11/16	14-1/16	<b>CAPACITY PER REV</b>		
<b>I</b>	1	1-1/2		0.27 FT-3	0.75 FT-3
<b>J</b>	1	1-1/4			
<b>K</b>	2-1/2	4			
<b>L</b>	4-1/4	6-1/4			
<b>M</b>	12-7/8	15-7/8			
<b>N</b>	6-7/16	7-15/16			



©2024 Magnum Systems, Inc. All rights reserved. Catalog number MS.4002.0824



[www.magnumsystems.com](http://www.magnumsystems.com)

Toll Free 800.748.7000 Fax 913.362.7863  
7945 Flint Street, Lenexa, KS 66214