



VALVE BAG IMPELLER PACKER

MODEL IPV

Magnum Systems' Model IPV was designed for practical performance on heavy, dense, difficult-to-feed powders, and fine granular mixtures. The Model IPV utilizes felt split-shaft seals on the rotating impeller and feed-screw drive shaft to prevent leakage and screws are used to keep the material flowing into the impeller blades.

PACKAGE HEAVY AND DENSE MATERIALS WITH SPEED AND PRECISION

Features

- Hardened impeller with dual-feed screws
- Pneumatic bag kicker
- Pneumatic bag clamp
- T-4000 weigh controller with digital readout

Optional Features

- Stainless steel construction/contact areas
- Tapered spout
- Purge spout
- TRV-1000 robotic bag placer
- TRUSeal ultrasonic sealer
- Integrate conveying and palletizing equipment

Materials Typically Handled

- Grout mixes
- Cement
- Stucco
- Clay
- Fly ash
- Limestone



One Partner For All Your Material Handling Needs.

VALVE BAG IMPELLER PACKER

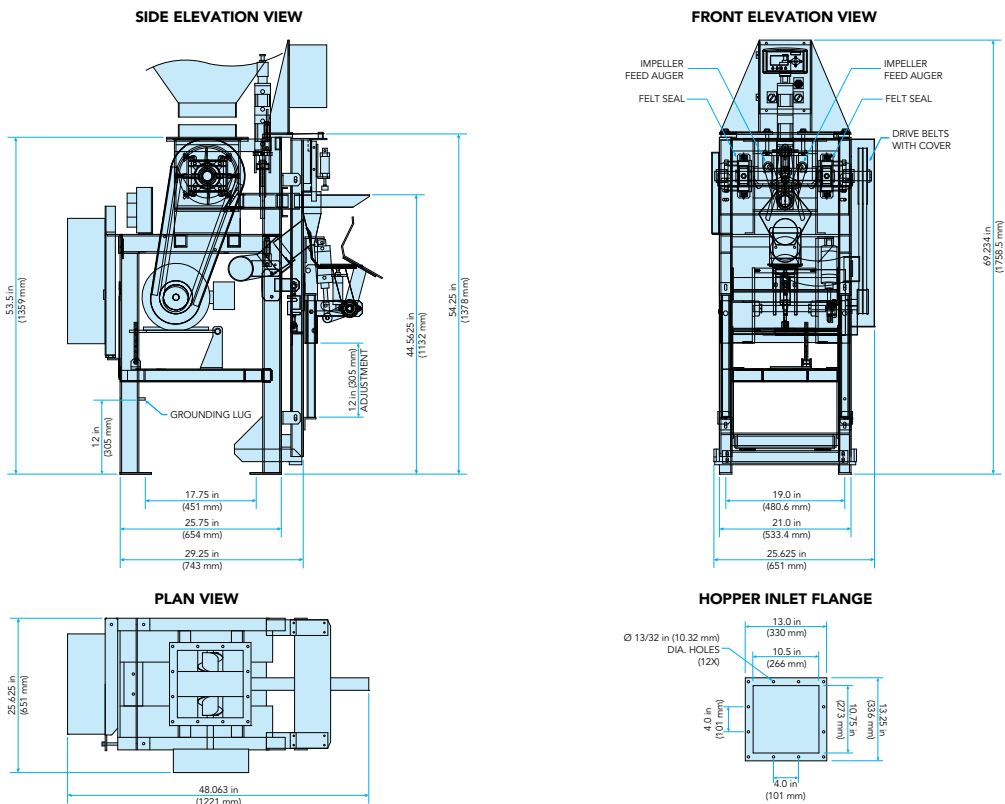


Diagram dimensions are for reference only*

SPECIFICATIONS

Speed	Up to 9 BPM
Accuracy	± 0.2 lb
Bag Weight Range	15 to 125 lb (6.8 to 56.7 kg)
Construction	Carbon steel blasted and painted
Electrical Requirements	230/460 volt, 3 phase, 60 hertz
Air Requirements	90 PSI, 0.5 cfm
Enclosures	NEMA12



ULTRASONIC SEALER

- Ultrasonic waves alter molecular structure of sealing agent without heat, which reduces product degradation
- Rigid mount setup at filling source decreases amount of bag movement while maintaining bag shape
- Ultrasonic waves displaces product from seal area providing a clean, positive seal
- Helps prevent product loss during shipping
- Capable of both plastic and paper valve sealable bags
- Works well with dusty, fluid, powder, and hydroscopic products



©2024 Magnum Systems, Inc. All rights reserved. Catalog number MS.1039.0824



www.magnumsystems.com

Toll Free 800.748.7000 Fax 913.362.7863
7945 Flint Street, Lenexa, KS 66214