



INCLINE AUGER PACKER

MODEL IAPO

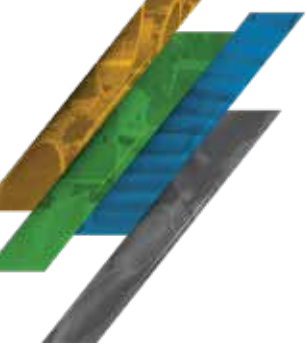
Magnum Systems' Model IAPO electronic bagging scale weighs material with extreme accuracy. The incline screw moves the material from the hopper to the bag. It utilizes the T-4000 digital controller to monitor bulk and dribble filling rate on the bagger to provide the best combination of speed and accuracy for handling high-density, moderately-flowing products such as cold patch asphalt mix.

HANDLE HIGH-DENSITY, MODERATELY-FLOWING MATERIALS LIKE COLD PATCH ASPHALT

Features

- Large loading hopper for bulk loading
- U-trough conveyor transferring asphalt from hopper to scale/bags
- Electronic load cell weighing system (no beams or pivots)
- Standard bulk/dribble fill cycle with adjustable speed settings
- Pneumatic product cutoff gate on auger scale
- V-clamp provides positive bag holding during fill cycle
- Bag-in-place switch confirms bag is ready to fill
- Up to 6 bpm typical (varies by specific product mix)





INCLINE AUGER PACKER

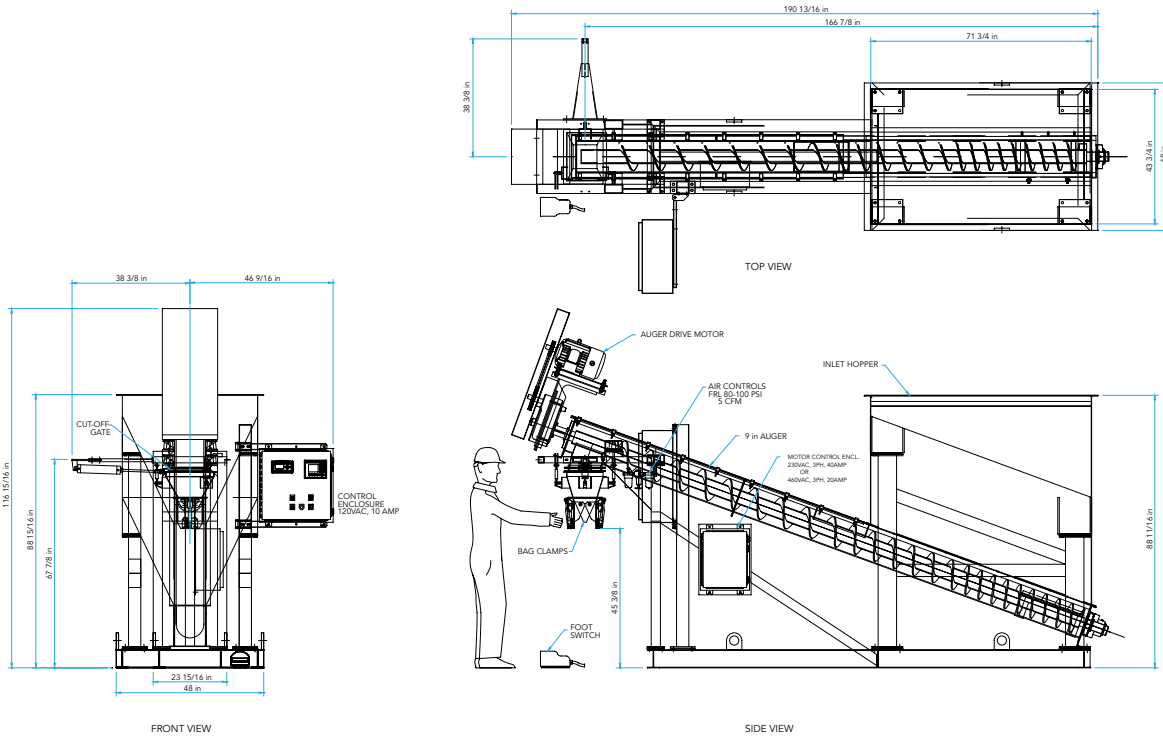


Diagram dimensions are for reference only*

SPECIFICATIONS

Product Contact Parts	Carbon steel, except screw in u-trough is s.s.
Load Hopper Opening	72" x 42" fill by front end loader
Load Hopper Construction	Carbon steel (painted)
U-Trough Conveyor	Carbon steel construction, 304 s.s. progressive pitch auger, 20 degree operating angle
Bag Weight	40 -120 lb bags (18-55 Kg)
Electrical Requirements Scale	115 VAC, single phase, 60 Hz
Electrical Requirements Auger	230/460 VAC, 3 phase, 60 Hz
Air Requirements	3 SCFM of 80-100 PSIG (compressed air must be clean and dry)
Operating Temperature	32-110 degrees Fahrenheit

LOADING HOPPER/CONVEYOR



IAPO - BAGGING SCALE



INTEGRATED BAGGING LINE



©2024 Magnum Systems, Inc. All rights reserved. Catalog number MS.1055.0824



www.magnumsystems.com

Toll Free 800.748.7000 Fax 913.362.7863
 7945 Flint Street, Lenexa, KS 66214